

MATERIALS AND FINISHES

BODY, COUPLING NUT: BRASS
PLATED SEE TABLE

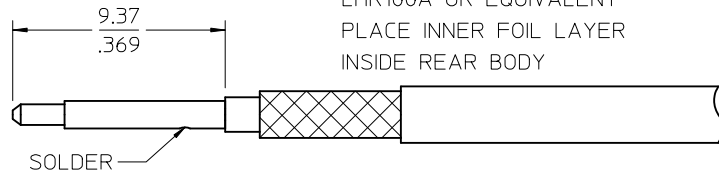
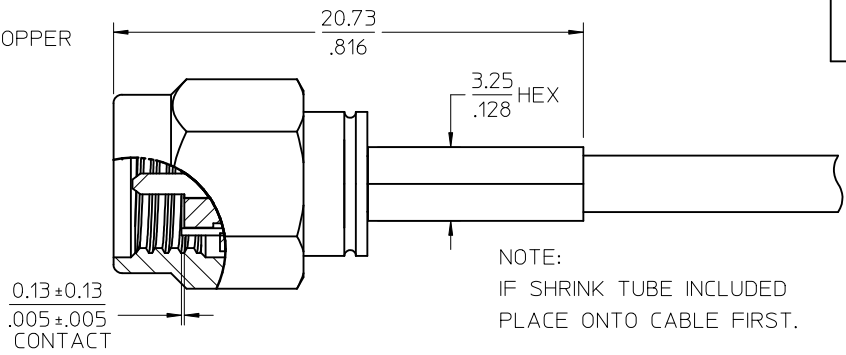
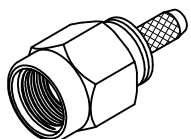
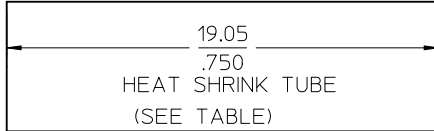
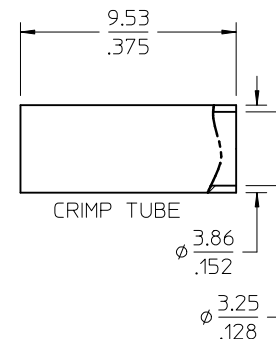
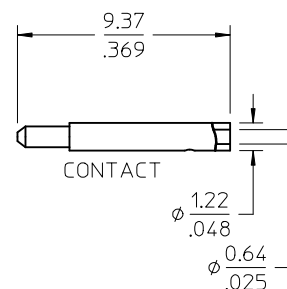
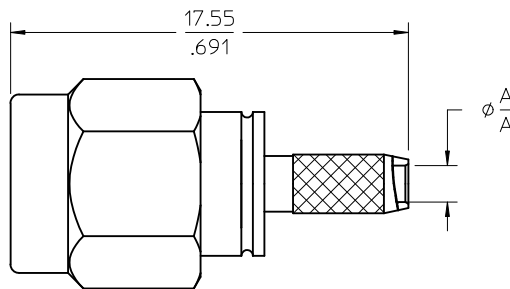
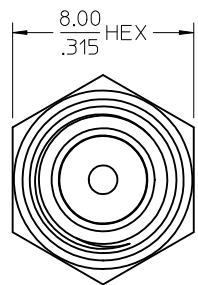
CRIMP TUBE: BRASS
PLATED NICKEL

CENTER CONTACT: BRASS
PLATED GOLD

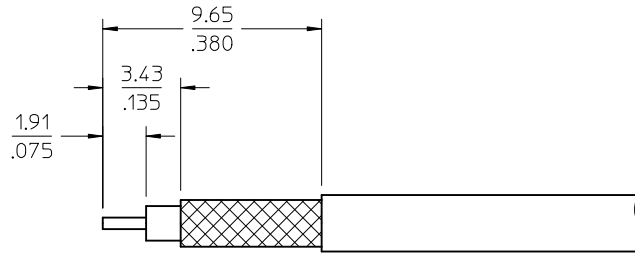
INSULATOR: TEFLON

SHRINK TUBE: VERSAFIT

C-RING: BERYLLIUM COPPER



73251-0457 & -0458 IS FOR LMR100A OR EQUIVALENT
PLACE INNER FOIL LAYER INSIDE REAR BODY



73251-0458	NO HEAT SHRINK TUBE/PACKED STANDARD TRAY	GOLD	1.627 / .0680
73251-0457	WITH HEAT SHRINK TUBE/PACKED STANDARD TRAY	GOLD	1.627 / .0680
73251-0456	73251-0450 PACKED ONE PIECE PER BAG	GOLD	1.613 / .0635
73251-0455	73251-0453 PACKED IN SMALL TRAY (20 CAVITY)	NICKEL	1.613 / .0635
73251-0454	WITHOUT SHRINK TUBE/PACKED STANDARD TRAY	NICKEL	1.613 / .0635
73251-0453	WITH SHRINK TUBE/PACKED STANDARD TRAY	NICKEL	1.613 / .0635
73251-0452	73251-0450, PACKAGED IN SMALL TRAY (20 CAVITY)	GOLD	1.613 / .0635
73251-0451	WITHOUT SHRINK TUBE/PACKED STANDARD TRAY	GOLD	1.613 / .0635
73251-0450	WITH HEAT SHRINK TUBE/PACKED STANDARD TRAY	GOLD	1.613 / .0635
PART NO.	DESCRIPTION	FINISH	MM / IN
		BODY/NUT	DIM A

PS-89675-3460	PRODUCT SPECIFICATION
MIL-STD-348A, FIG. 310.1	INTERFACE
SPECIFICATION	DESCRIPTION

CHG: ADDED -0457 & -0458.

EC NO: URF2011-0642

DRW: DRWINAROBERTSON 2011/05/02

CHK: CHKD:SSS 2011/05/02

APPR: APPR: JWIENER 2011/05/03

DESCRIPTION

QUALITY SYMBOLS

▽=0

▽=0

REV: A6

GENERAL TOLERANCES (UNLESS SPECIFIED)

	mm	INCH
4 PLACES	± .005	± .0002
3 PLACES	± .005	± .0002
2 PLACES	± .005	± .0002
1 PLACE	± .005	± .0002

ANGULAR ± 2 °

DRAFT WHERE APPLICABLE MUST REMAIN WITHIN DIMENSIONS

DIMENSION STYLE: MM/IN

SCALE: INCH

DESIGN UNITS: INCH

THIRD ANGLE PROJECTION

DRAWN BY: TEF DATE: 2000/11/09

CHECKED BY: SSS DATE: 2000/11/09

APPROVED BY: GMH DATE: 2000/11/09

TITLE: SMA PLUG STRAIGHT RG-316 50 OHM SMA-PC EWR-1766

MATERIAL NO. SEE TABLE

DOCUMENT NO. SD-73251-045

SHEET NO. 1 OF 1

THIS DRAWING CONTAINS INFORMATION THAT IS PROPRIETARY TO MOLEX INCORPORATED AND SHOULD NOT BE USED WITHOUT WRITTEN PERMISSION