

NOTES:

1.0 ELECTRICAL SPECIFICATIONS:

- 1.1 FREQUENCY RANGE: 0.5 to 2.0 GHz
- 1.2 INSERTION LOSS: 0.4dB + 0.4[f]dB MAX.  
(0.6dB AT 0.5 GHz SLOPING TO 1.2dB AT 2.0 GHz)

1.3 ISOLATION: 15dB MIN.

1.4 VSWR (MAX): 1.50:1

1.5 OUTPUT UNBALANCE:  
AMPLITUDE: 0.5dB MAX.  
PHASE: 5° MAX.

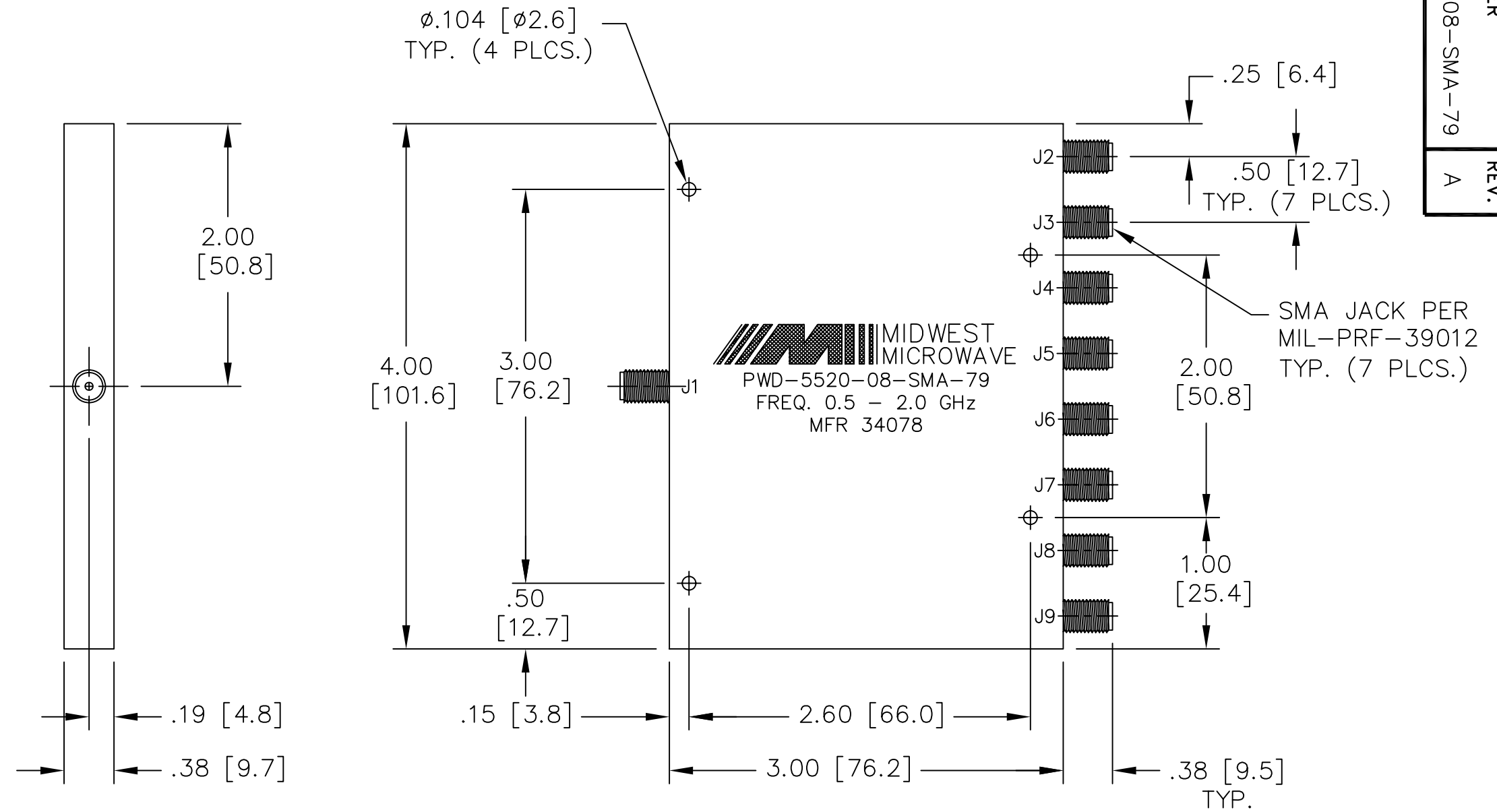
1.6 MAX. INPUT POWER: 10 WATT MAX.

2.0 FINISHING:

- 2.1 GREY PER MIL-E-15090 TYPE II, CLASS 2  
OVER MIL-C-5541 CLASS 3A  
MEETS MIL-F-14072  
MEETS MIL-E-5400 AND MIL-E-16400V.

2.2 MARKING: MARK UNIT AS SHOWN  
(REF.: SLK-08065-82-01)

3.0 DIMENSIONS IN BRACKETS ARE  
IN MILLIMETERS.



MODEL NUMBER	PWD-5520-08-SMA-79
REV.	A

DATE	12/14/00	4/4/01
DESCRIPTION	RELEASED	ECN 17897
REV.	-	A

UNLESS OTHERWISE NOTED DIMENSIONS ARE IN INCHES AND TOLERANCES ARE:  3 PLACE DECIMALS ±.005 2 PLACE DECIMALS ±.02 FRACTIONS ±1/64 PARALLELITY: T.I.R. _____ FLATNESS: T.I.R. _____ CONCENTRICITY: T.I.R. _____ ANGLES AND PERPENDICULARITY: ±1°	FSCM NO. <b>34078</b>	<b>MIDWEST MICROWAVE</b>	
	NOTICE: The information contained in this drawing is proprietary and must not be used without the permission of Midwest Microwave	TITLE POWER DIVIDER	DRAWING NUMBER PWD-5520-08-SMA-79
SCALE: 1=1	SHEET 1 of 1	DRAWN/DATE M. STAFFORD 12/12/00	ENG./DATE P. GOODMAN 12/12/00
CHECKED/DATE	APPROVED/DATE		