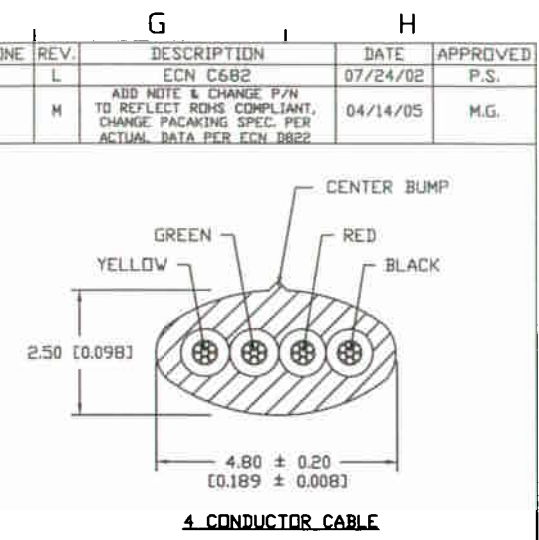
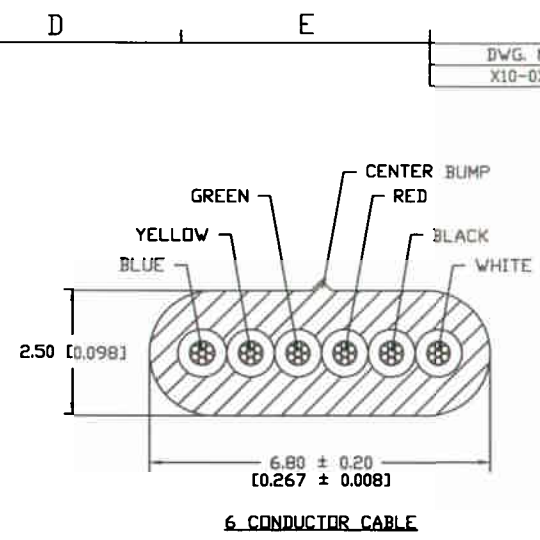
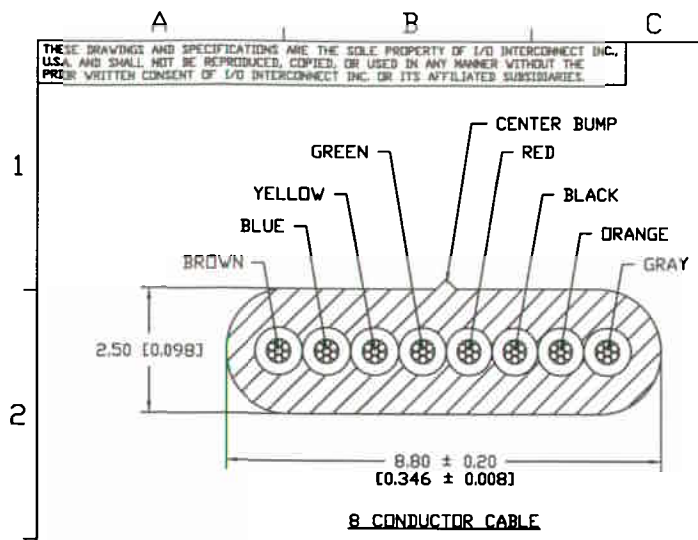


THESE DRAWINGS AND SPECIFICATIONS ARE THE SOLE PROPERTY OF I/O INTERCONNECT INC., U.S.A. AND SHALL NOT BE REPRODUCED, COPIED, OR USED IN ANY MANNER WITHOUT THE PRIOR WRITTEN CONSENT OF I/O INTERCONNECT INC. OR ITS AFFILIATED SUBSIDIARIES.

DWG. NO.	ZONE	REV.	DESCRIPTION	DATE	APPROVED
X10-0X3		L	ECN C682	07/24/02	P.S.
		M	ADD NOTE & CHANGE P/N TO REFLECT ROHS COMPLIANT. CHANGE PACKAGING SPEC. PER ACTUAL DATA PER ECN B822	04/14/05	M.G.



NOTES: UNLESS OTHERWISE SPECIFIED.

1.0 MATERIAL AND SPECIFICATIONS

1.01 CONDUCTORS: 26 AWG (12/0.12 mm) STRANDED BARE COPPER.

1.02 INSULATION: POLYPROPYLENE

1.03 COLOR: PER CALLOUT

1.04 PACKAGING: (SEE PAGE 2)

2.0 ELECTRICAL CHARACTERISTICS

2.01 TEMPERATURE & VOLTAGE RATING: 80°C 30 V

2.02 CONDUCTORS RESISTANCE: 148 OHMS/KM MAX. AT 20°C

2.03 INSULATION RESISTANCE: 100 MEGOHMS/KM MIN. AT 20°C

2.04 CAPACITANCE: 15 PF/FT (MAX)

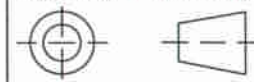
2.05 DIELECTRIC TEST: AC-500V PER 1 MINUTE

3.0 PLACE BAR CODE LABEL ON THE OUTSIDE OF EACH SHIPPING BOX LABEL DETAIL SEE DWG 090-990-001. FOR CUSTOMER CODE 4DGK ONLY.

4.0 PART TO BE ROHS COMPLAINT.

GLF-121-410-003	4	SILVER SATIN	[0.551 ± 0.039] 14.00 ± 1.00
GLF-121-410-013	4	BLACK	[0.551 ± 0.039] 14.00 ± 1.00
GLF-121-410-023	4	WHITE	[0.551 ± 0.039] 14.00 ± 1.00
GLF-121-610-003	6	SILVER SATIN	[0.551 ± 0.039] 14.00 ± 1.00
GLF-121-610-013	6	BLACK	[0.551 ± 0.039] 14.00 ± 1.00
GLF-121-610-023	6	WHITE	[0.551 ± 0.039] 14.00 ± 1.00
GLF-121-810-003	8	SILVER SATIN	[0.748 ± 0.039] 19.00 ± 1.00
GLF-121-810-013	8	BLACK	[0.748 ± 0.039] 19.00 ± 1.00
GLF-121-810-023	8	WHITE	[0.748 ± 0.039] 19.00 ± 1.00
I/O INTERCONNECT PART NUMBER	NUMBER OF CONDUCTORS	COLOR	Ø 'A'

THIRD ANGLE PROJECTION



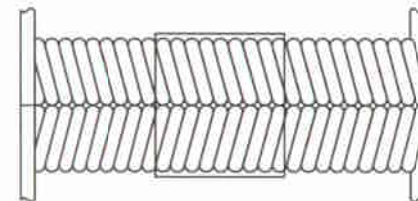
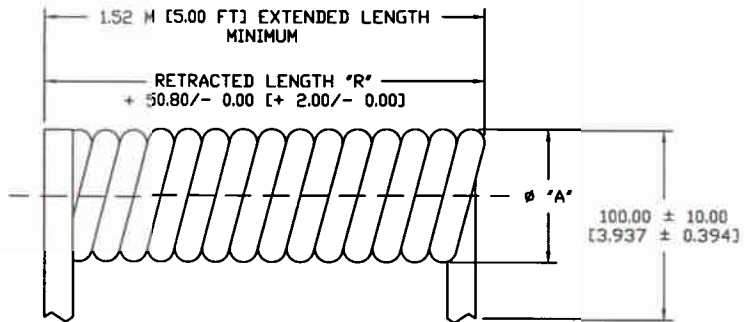
UNLESS OTHERWISE NOTED:
1) DIMENSIONS ARE IN MILLIMETER (INCHES)
2) TOLERANCES:
X.X ± 10.0 [0.39]
X.XX ± 0.25 [0.01]

I/O INTERCONNECT
SANTA ANA, CALIFORNIA

DR. BY: JERRY SUN	DATE: 04/14/05	TITLE: 26 AWG (12/0.12 mm) BARE COPPER, 5.00 FT EXTENDED, NON-UL, UNSHIELDED, MODULAR CABLE.
DR. CHECKED:		
REV:		PART NO: GLF-121-X10-0X3
ENGINEER:		DWG NO: GLF-121-X10-0X3
DATE/SCALE:		CUSTOMER: I/O INTERCONNECT
SA:		REV. M
SCALE: NONE		SHEET 1 OF 2

THESE DRAWINGS AND SPECIFICATIONS ARE THE SOLE PROPERTY OF I/O INTERCONNECT INC., U.S.A. AND SHALL NOT BE REPRODUCED, COPIED, OR USED IN ANY MANNER WITHOUT THE PRIOR WRITTEN CONSENT OF I/O INTERCONNECT INC. OR ITS AFFILIATED SUBSIDIARIES.

DWG. NO.	ZONE	REV.	DESCRIPTION	DATE	APPROVED
X10-0X3		L	ECN C682	07/24/02	P.S.
		M	ADD NOTE & CHANGE P/N TO REFLECT RDHS COMPLIANT, CHANGE PACKING SPEC. PER ACTUAL DATA PER ECN 0822	04/14/05	M.G.



BUNDLE SPECIFICATION

NOTES: UNLESS OTHERWISE SPECIFIED.

4.0 PACKAGING SPECIFICATION

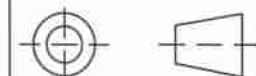
4.01 USE CLEAR TAPE TO BUNDLE 25 CABLES TOGETHER

4.02 PLACE PLASTIC BAG IN SHIPPING BOX, SEE TAB BLOCK FOR PACKAGING QUANTITY PER SHIPPING BOX. CLOSE PLASTIC BAG AND SEAL BOX ALONG 3 SURFACES WITH TAPE.

4	431.80	[17.000]	L=13.00" X W=20.00" X H=9.00"	10 BUNDLE, 250 PCS
6	457.20	[18.000]	L=13.00" X W=20.00" X H=9.00"	10 BUNDLE, 250 PCS
8	558.80	[22.000]	L=13.00" X W=25.00" X H=9.00"	5 BUNDLE, 125 PCS
CONDUCTORS	MILLIMETERS	INCHES	DIMENSION MAX.	PACKAGING QUANTITY
NUMBER OF	RETRACTED LENGTH 'R'		OUTSIDE SHIPPING BOX	PER SHIPPING BOX

TABULATION BLOCK

THIRD ANGLE PROJECTION



UNLESS OTHERWISE NOTED:
 1) DIMENSIONS ARE IN MILLIMETER (INCHES)
 2) TOLERANCES:
 X.X ± 10.0 (0.39)
 X.XX ± 0.25 (0.01)

I/O INTERCONNECT
 SANTA ANA, CALIFORNIA

DR. BY	JERRY SUN	04/14/05	TITLE	26 AWG (12/0.12 mm) BARE COPPER, 5.00 FT EXTENDED, NON-UL, UNSHIELDED, MODULAR CABLE
DR. CHECKED			PART NO.	GLF-121-X10-0X3
ENG.			DWG. NO.	GLF-121-X10-0X3
CUST./SALES			CUSTOMER	I/O INTERCONNECT
REV.			SCALE	NONE
REV. M			SHEET	2 OF 2