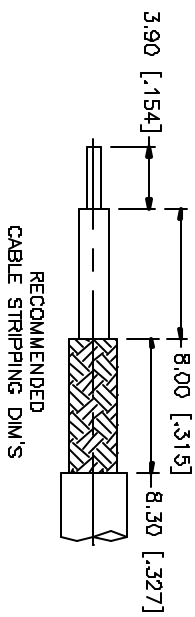
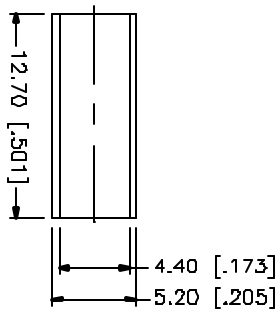
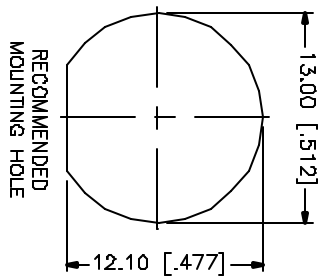
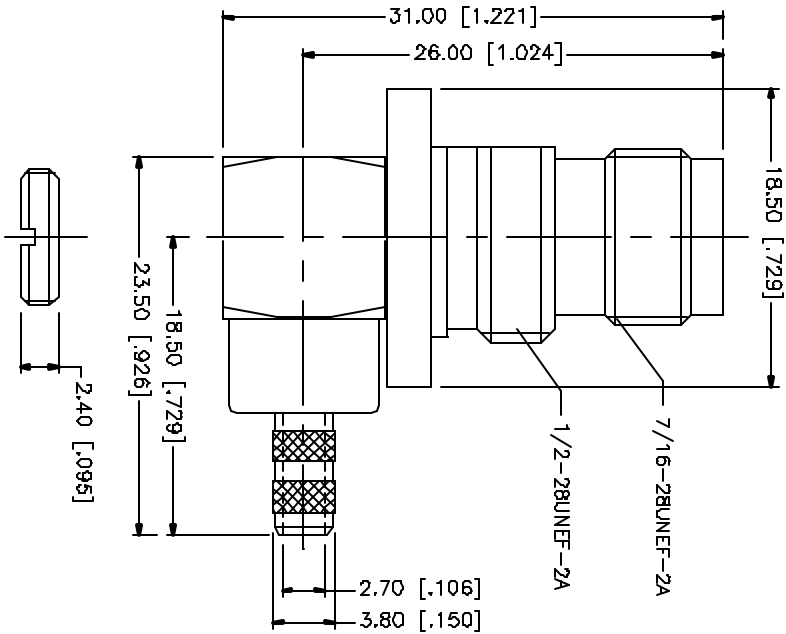
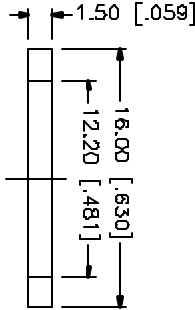
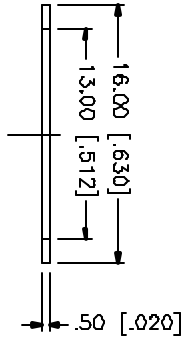
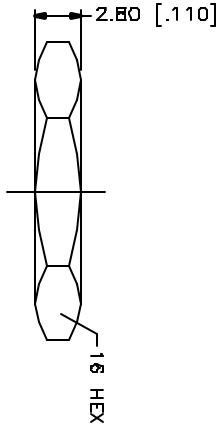


| REV. | DATE | DESCRIPTION |
|------|----------|-----------------|
| NC | 08/25/04 | INITIAL RELEASE |



NOTE:
 1. CRIMPED FERRULE
 HEX CRIMP SIZE .213"

| QTY | DESCRIPTION | MATERIAL | FINISH | QTY | UNIT | DESCRIPTION | DATE | DATE | DATE | DATE | DATE |
|-----|-------------|--------------|---------|-----|------|-------------|----------|------|------|------|------|
| 1 | NUT | BRASS | NICKEL | 1 | 1 | | 08/25/04 | | | | |
| 1 | FERRULE | COPPER | NICKEL | 1 | 1 | | | | | | |
| 1 | HEX NUT | BRASS | NICKEL | 1 | 1 | | | | | | |
| 1 | LOCK WASHER | BRASS | NICKEL | 1 | 1 | | | | | | |
| 1 | BASKET | RUBBER | RED | 1 | 1 | | | | | | |
| 1 | CONTACT PIN | PHOS. BRONZE | GOLD | 1 | 1 | | | | | | |
| 1 | INSULATOR | TEFLON | NATURAL | 1 | 1 | | | | | | |
| 1 | BODY | BRASS | NICKEL | 1 | 1 | | | | | | |
| | DESCRIPTION | MATERIAL | FINISH | QTY | | | | | | | |

Amphenol Connex

TNC R/A BULKHEAD CRIMP JACK
 (FOR RG-58/U, 58C/U)

122500

DWG. NO. 122500.DWG REV. NC SIZE A SCALE NA

CAD FILE C:\122\122500.DWG

UNLESS OTHERWISE SPECIFIED, MATERIALS AND FINISHES ARE TO BE AS SHOWN ON THIS DRAWING. DIMENSIONS ARE GIVEN IN MILLIMETERS AND INCHES. DIMENSIONS ARE TO BE TAKEN FROM THE DIMENSIONED POINTS. DIMENSIONS ARE TO BE TAKEN FROM THE DIMENSIONED POINTS.

UNLESS OTHERWISE SPECIFIED, MATERIALS AND FINISHES ARE TO BE AS SHOWN ON THIS DRAWING. DIMENSIONS ARE GIVEN IN MILLIMETERS AND INCHES. DIMENSIONS ARE TO BE TAKEN FROM THE DIMENSIONED POINTS. DIMENSIONS ARE TO BE TAKEN FROM THE DIMENSIONED POINTS.

UNLESS OTHERWISE SPECIFIED, MATERIALS AND FINISHES ARE TO BE AS SHOWN ON THIS DRAWING. DIMENSIONS ARE GIVEN IN MILLIMETERS AND INCHES. DIMENSIONS ARE TO BE TAKEN FROM THE DIMENSIONED POINTS. DIMENSIONS ARE TO BE TAKEN FROM THE DIMENSIONED POINTS.

DO NOT SCALE DRAWINGS

APPROVALS

DATE

DATE

DATE

DATE

DATE