



P/N 1111903 24-Pin SOWIC-to-22-Pin 0.400" CRT DIP Adapter for 75ALS162 and Others

FEATURES

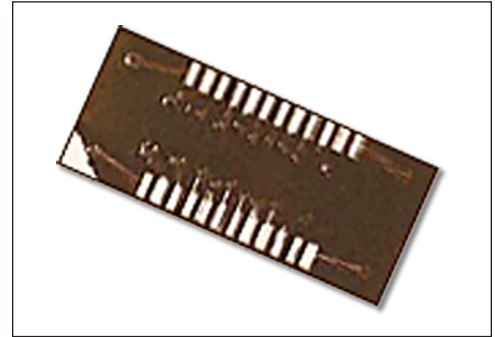
- A cost-effective means of upgrading to SOIC without changing your PCB layout.

GENERAL SPECIFICATIONS

- BOARD MATERIAL: 0.062 thick FR-4 with 1-oz. Cu traces, both sides. RoHS Compliant Board FR406 or IS410 per IPC 4101A/46
- PINS: Brass 360 1/2-hard per UNS C36000, ASTM B16/B16M
- PIN PLATING: 200μ [5.08μ] Sn/Pb 93/7 per ASTM B579-73 over 100μ [2.54μ] Ni per SAE-AMS-QQ-N-290. The RoHS version pin is 10μ [0.25] min. Au per MIL-G-45204 over over 100μ [2.54μ] Ni per SAE-AMS-QQ-N-290
- OPERATING TEMPERATURE: 221°F [105°C]

MOUNTING CONSIDERATIONS

- SUGGESTED PCB HOLE SIZE: 0.028 ±0.003 [0.71 ±0.08] dia.



CUSTOMIZATION: In addition to the standard products shown on this page, Aries specializes in custom design and production. Special materials, platings, sizes, and configurations can be furnished, depending on the quantity. **NOTE:** Aries reserves the right to change product general specifications without notice.

ORDERING INFORMATION

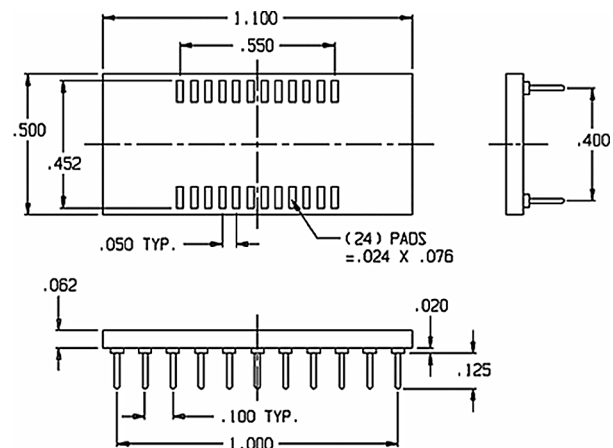
1111903

1111903-RC = RoHS Complaint Version

Pin Nos.	
SOIC	DIP
1	1
2	2
3	3
4	4
5	5
6	6
7	7
8	8
9	9
10	10
11	NC
12	11
13	12
14	NC
15	13
16	14
17	15
18	16
19	17
20	18
21	19
22	20
23	21
24	22

ALL DIMENSIONS: INCHES [MILLIMETERS]

ALL TOLERANCES: ±0.005 [0.13] UNLESS OTHERWISE SPECIFIED



Pinout List																								
SOIC	1	2	3	4	5	6	7	8	9	10	11	12	13	14	15	16	17	18	19	20	21	22	23	24
DIP	1	2	3	4	5	6	7	8	9	10	NC	12	13	NC	15	16	17	18	19	20	21	22	23	24



ARIES
ELECTRONICS, INC.

Bristol, PA 19007-6810 USA
 TEL (215) 781-9956 • FAX (215) 781-9845
 WWW.ARIESELEC.COM • INFO@ARIESELEC.COM

PRINTOUTS OF THIS DOCUMENT MAY BE OUT OF DATE AND SHOULD BE CONSIDERED UNCONTROLLED

18071
Rev. AA