



Important notes about Classic Panel Mount Indicator Catalog Pages

SCROLL DOWN TO VIEW CATALOG PAGE

This catalog page is out-of-print and is used with the understanding that the information shown could be out-of-date. In many cases, part numbers shown on this page are discontinued. Most notably, many "Complete Assembly" parts, which consist of a cap and a base, can no longer be ordered by the 14-digit ordering code. To obtain these parts, please order the cap and base part numbers separately. This process provides the components contained with the original "Complete Assembly" part number.

All Dialight Classic Panel Mount Indicators need a leading 3-digit numerical series. In some cases, this catalog will show a 2-digit series. In this case, please add a leading zero. For example, 81-0211-300 becomes 081-0211-300.

Part numbers listed on Dialight catalog pages designate parts with Red lenses. For ordering lens colors other than red, consult the chart below. In most cases, the color is dictated by the 7th digit. For example, 095-0932-003 for a green cap.

| Lens Colors | |
|-------------|------------------|
| 1 - Red | 5 - White |
| 2 - Green | 6 - Light Yellow |
| 3 - Yellow | 7 - Clear |
| 4 - Blue | |

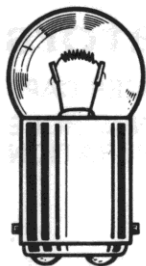
[Click here for a cross reference guide to assembly part numbers.](#)

[Click here to view Frequently Asked Questions concerning Panel Mount Indicators.](#)

SCROLL DOWN TO VIEW CATALOG PAGE

Large Incandescent Indicators

FOR MOUNTING IN 1" CLEARANCE HOLE
FOR 6 TO 32V OPERATION



G-6
DOUBLE CONTACT
BAYONET BASE

See lamp ratings
on page K.

Recognized under the component
program of Underwriters'
Laboratories Inc.
75W., 125V.

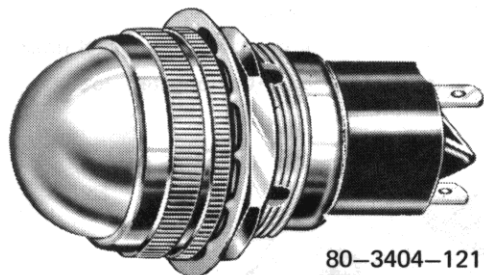


These series indicator lights meet or exceed requirements of MIL-L-3661.

MATERIALS AND FINISHES

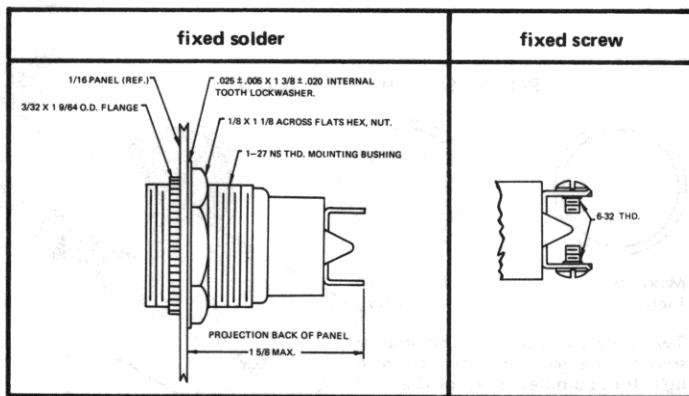
- **Mounting Bushing:** Standard—brass, white nickel finish. Optional—black nickel finish.
- **Lens Holder and Knurled Flange Ring:** Brass, polished chrome finish. Optional—black nickel or satin chrome finish.
- **Mounting Nut:** Brass, white nickel finish.
- **Internal-tooth Lockwasher:** Phosphor bronze, white nickel finish.
- **Terminals:** Solder — brass hot tinned. Screw—brass, white nickel finish. Quick Connect—brass, tinned. Mate with standard female receptacles.

These assemblies are shown with screw-on lens caps. Bayonet lock lens caps are also available. Information will be furnished on request.



80-3404-1211-301
Dome lens

WITH SCREW-ON LENS CAPS



How to designate the three digit part number suffix (-XXX)

| Finish | Resistor | Hardware |
|---------------------|----------|---|
| 2 — black nickel | 0 — none | 1 — brass |
| 3 — polished chrome | | 3 — water-tight on the face of the panel, (screw-on caps only). |
| 4 — satin chrome | | |

80 SERIES

BASE PART NUMBERS

| CAP PART NUMBERS | COMPLETE ASSEMBLY PART NUMBERS |
|--|---|
| <p>TORPEDO 80-0511-300 back frosted 80-0531-300 unfrosted</p> | <p>80-3406-05-301</p> <p>80-3206-05-301</p> |
| <p>DOME 80-1211-300 back frosted 80-1231-300 unfrosted</p> | <p>80-3404-0511-301</p> <p>80-3404-0531-301</p> <p>80-3204-0511-301</p> <p>80-3204-0531-301</p> |
| <p>TORPEDO FACETED 80-1331-300 unfrosted</p> | <p>80-3404-1211-301</p> <p>80-3404-1231-301</p> <p>80-3204-1211-301</p> <p>80-3204-1231-301</p> <p>80-3404-1331-301</p> <p>80-3204-1331-301</p> |

Part numbers shown in gray are normally in inventory at your Dialight Distributor.

Order complete with lamp to be assured of receiving the indicator light and correct lamp together for immediate use.