

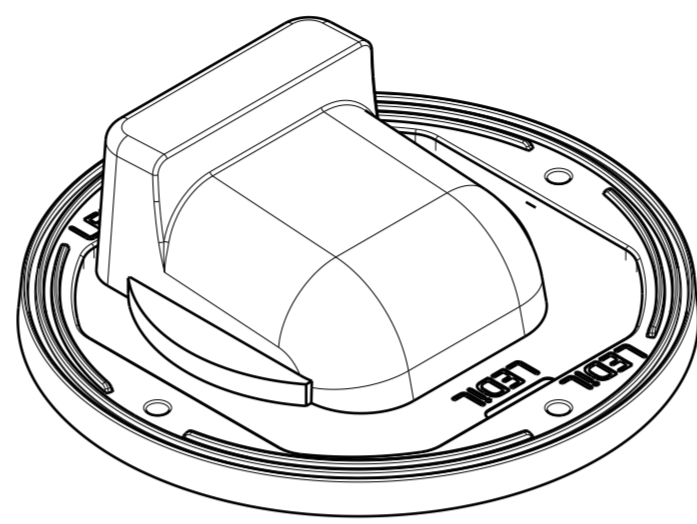
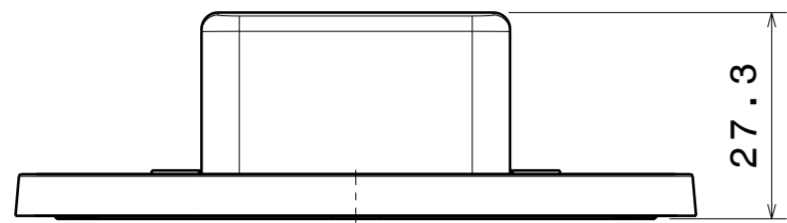
DETAILS

Product Number	FN15187_STELLA-T4
Family	STELLA
Type	Pack
Color	white
Diameter	90 mm
Height	26,9 mm
Style	round
Optic Material	Silicone
Holder Material	
Fastening	
Status	production ready
ROHS Compliant	Yes
Date Updated	2/02/2017

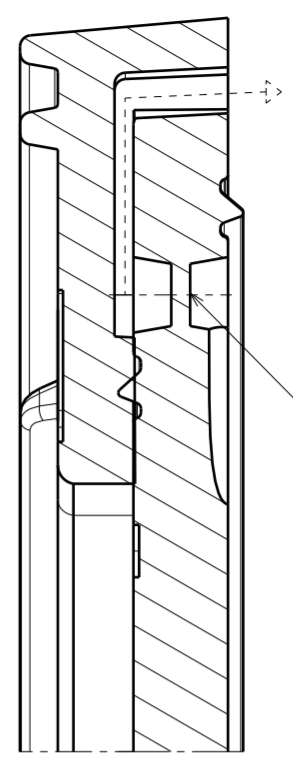


OPTICAL PROPERTIES

LED	Viewing Angle	Light Beam	Efficiency	cd/lm	Connector
VERO18	sim: Asymmetric	Streetlight	sim: 91 %	-	-
V10 Gen7	sim: Asymmetric	Streetlight	sim: 94 %	sim: 0.510	Bender Wirth: 434 Typ Z1
V22 Gen7	sim: asym	Streetlight	sim: 94 %	sim: 0.516	Bender Wirth: 431 Typ Z1
V18 Gen7	sim: Asymmetric	Streetlight	sim: 94 %	sim: 0.510	-
V13 Gen7	sim: Asymmetric	Streetlight	sim: 96 %	sim: 0.500	Bender Wirth: 477 Typ Z1
CLL03x/CLU03x	sim: Asymmetric	Streetlight	sim: 93 %	-	-
CXA/B 30xx	sim: Asymmetric	Streetlight	-	-	-
CXA/B 25xx	sim: Asymmetric	Streetlight	sim: 92 %	sim: 0.450	-
CXA/B 1830	sim: Asymmetric	Streetlight	sim: 93 %	-	-
LUXEON CoB 1208	Asymmetric deg	Streetlight	93 %	0.500	-
LUXEON CoB 1211	Asymmetric deg	Streetlight	92 %	0.500	-
CXM-18	asymmetric deg	Streetlight	94 %	0.500	-
CXM-14	asymmetric deg	Streetlight	94 %	0.500	-
Soleriq S13	asymmetric deg	Streetlight	93 %	0.530	-
Soleriq S19	asymmetric deg	Streetlight	93 %	0.490	-
Soleriq P9	asymmetric deg	Streetlight	94 %	0.710	-
Soleriq P13	asymmetric deg	Streetlight	93 %	0.490	-
MJT COB LES 22	Asymmetric deg	Streetlight	90 %	0.480	Bender Wirth: 431 Typ Z1
MJT COB LES 14.5	asym deg	Streetlight	91 %	0.600	Bender Wirth: 433 Typ Z1
SLE G5 LES15	Asymmetric deg	Streetlight	91 %	0.500	-

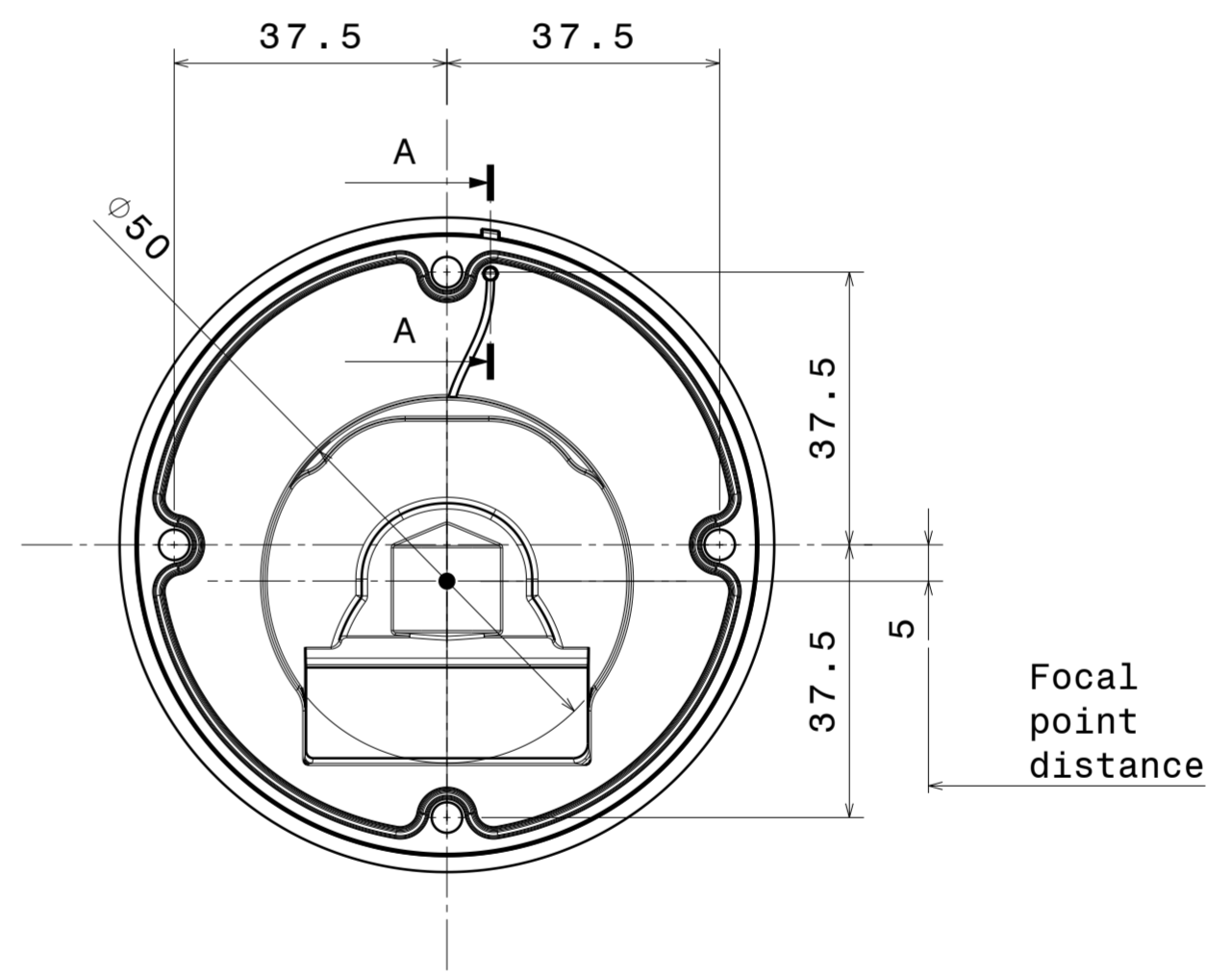
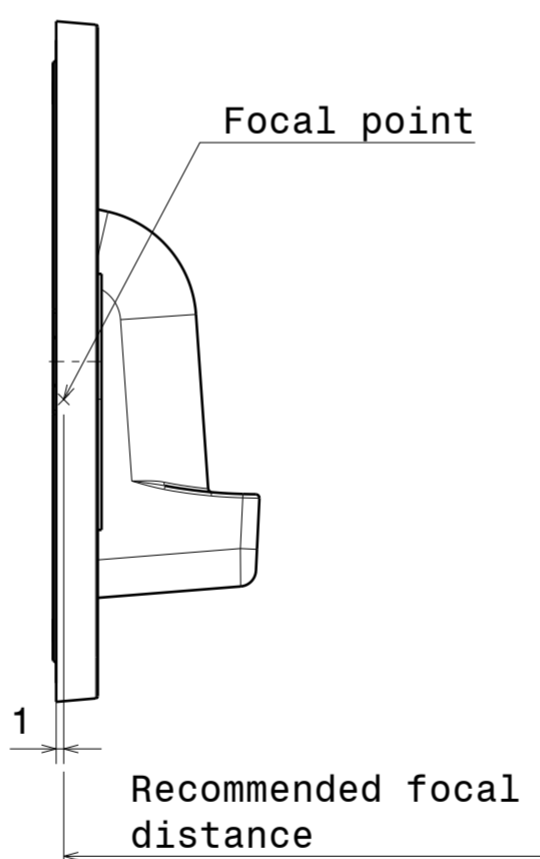
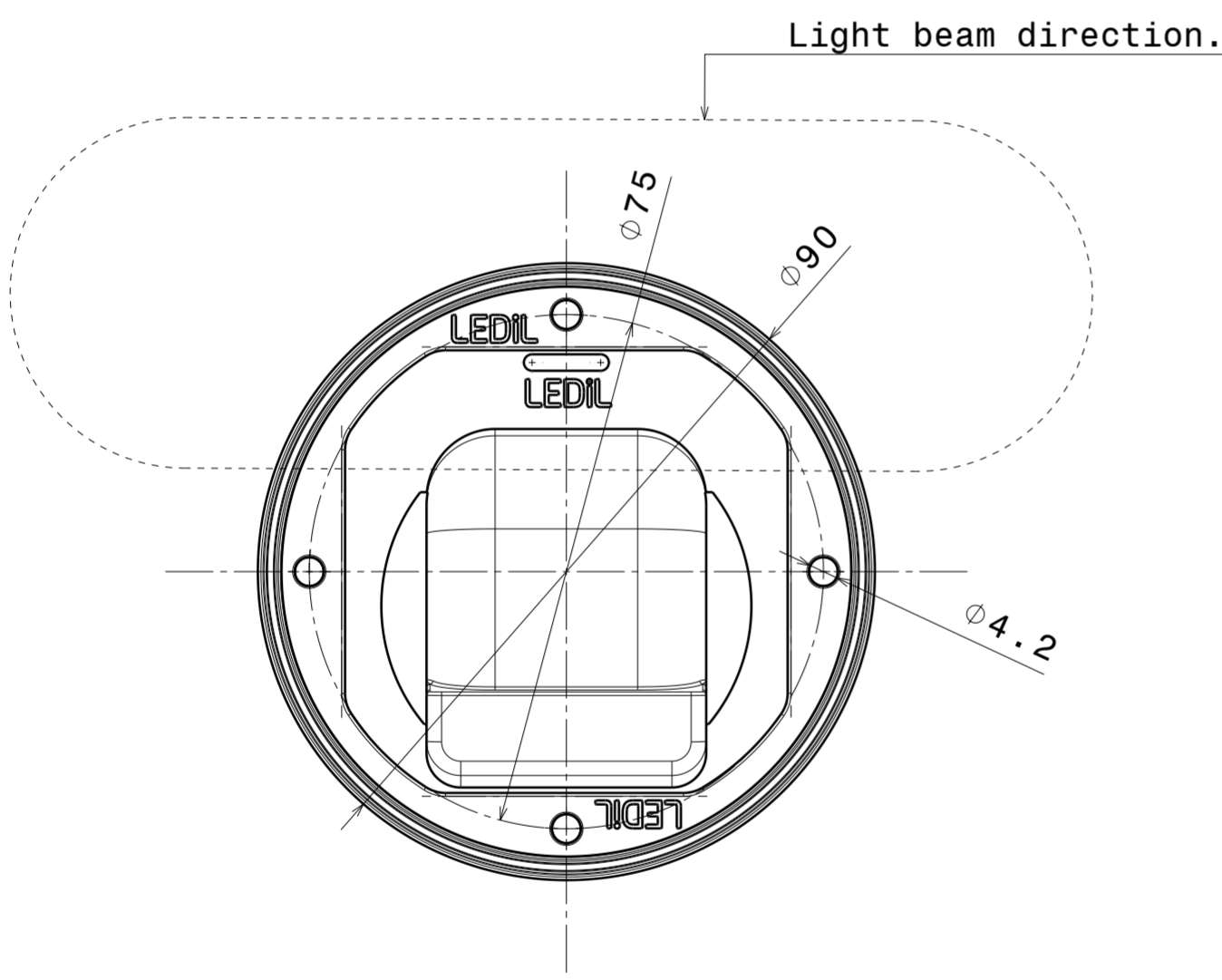


Isometric view
Scale: 1:1



Venting pipe:
Piercing this membrane
will Allow lens breathing

Section view A-A
Scale: 5:1



NOTE: Maximum recommended tightening torque for STELLA-FRAME-WHT is 0,4Nm

INDEX	PART NO	DESCRIPTION	MATERIAL	COLOUR
1	F14514	STELLA-T4	Optical grade LSR	
2	F14252	STELLA-FRAME-WHT	PA66GF30	white

Tolerances if not otherwise shown
According to DIN ISO 2768-1
Linear measures: class V
Please note that due to the elasticity of
products made of silicone actual measured
values may vary, and therefore typical
tolerance values may not be applied.

LEDiL Ledil Oy
Salorankatu 10
FIN 24240 SALO
Finland

THIRD ANGLE PROJECTION:

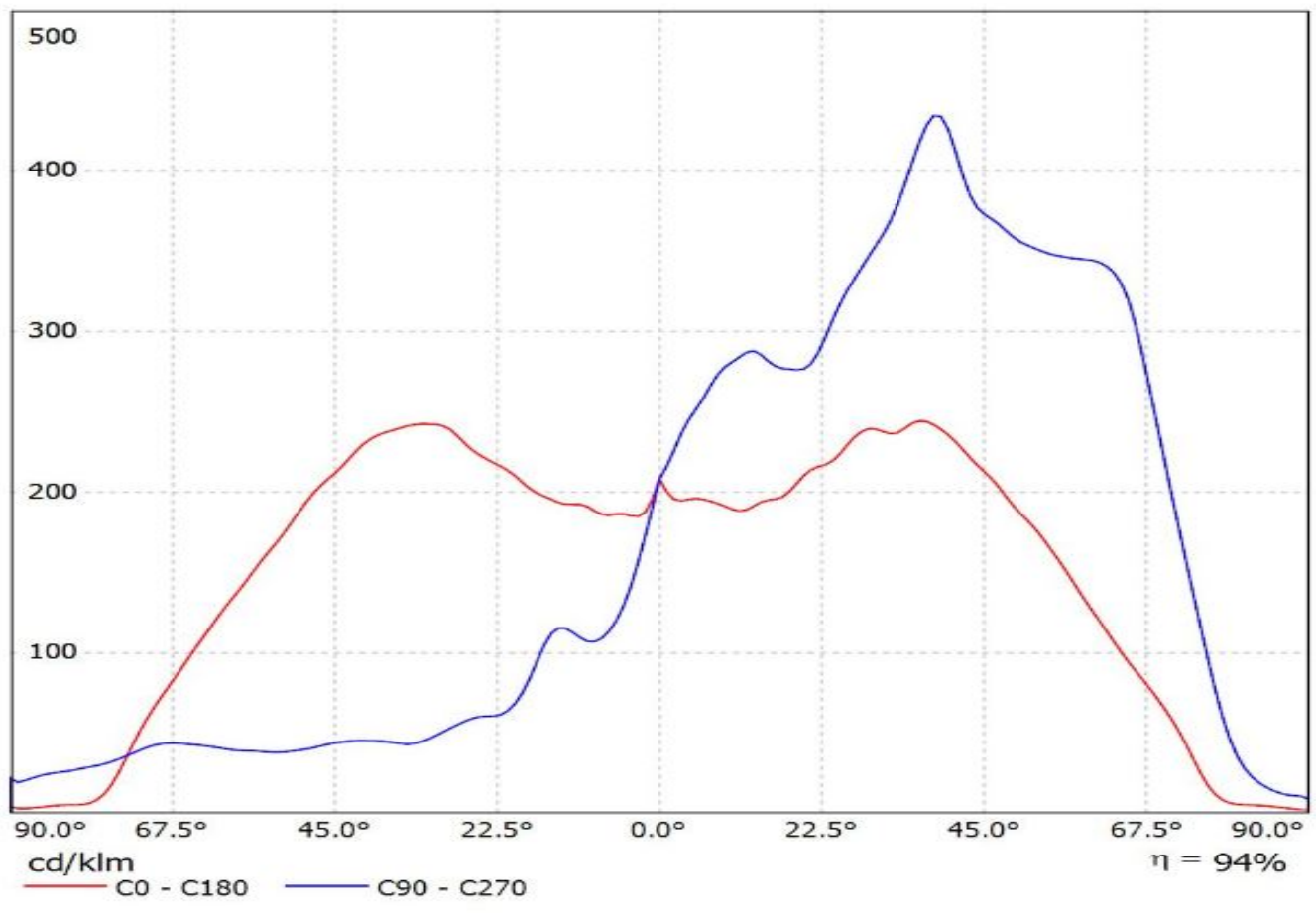
DRAWING TITLE
STELLA-T4 datasheet

This drawing is the property
of LEDiL Oy. It may not be
reproduced, copied or
communicated without a written
agreement with LEDiL Oy.

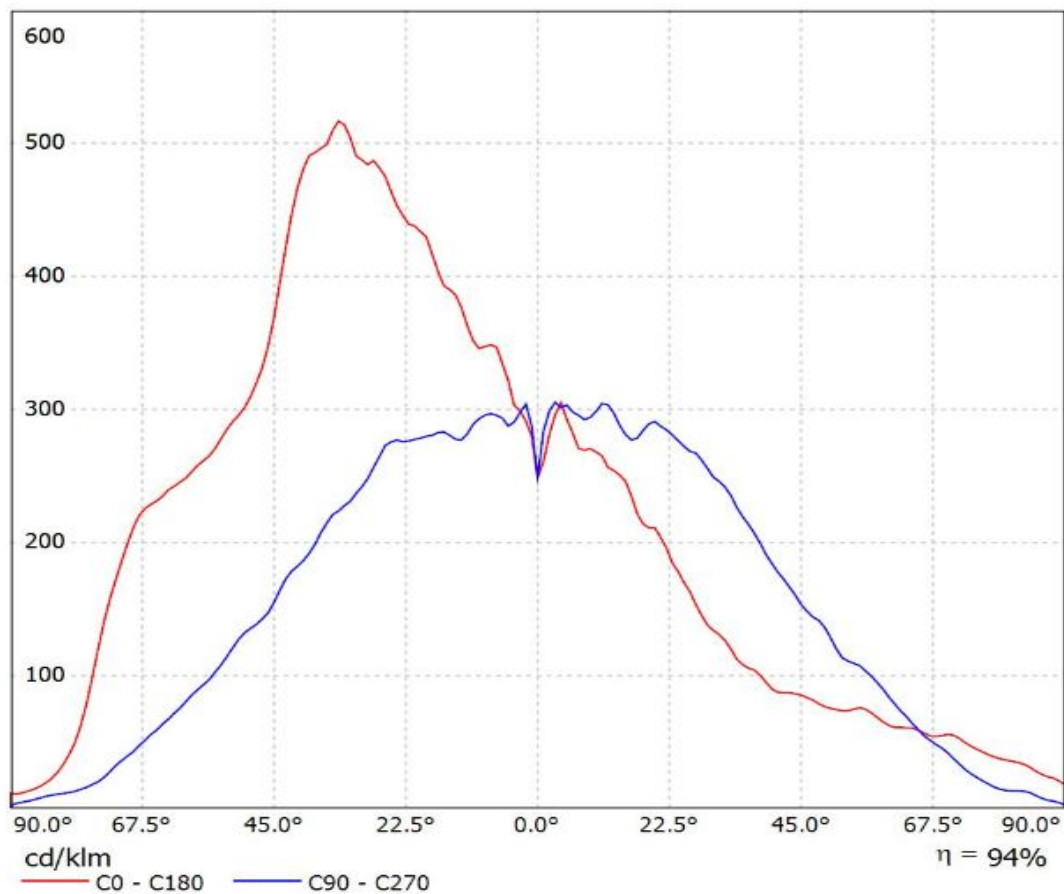
SIZE PART NUMBER
A2 FN15187

SCALE 1:1 WEIGHT - SHEET 1/1

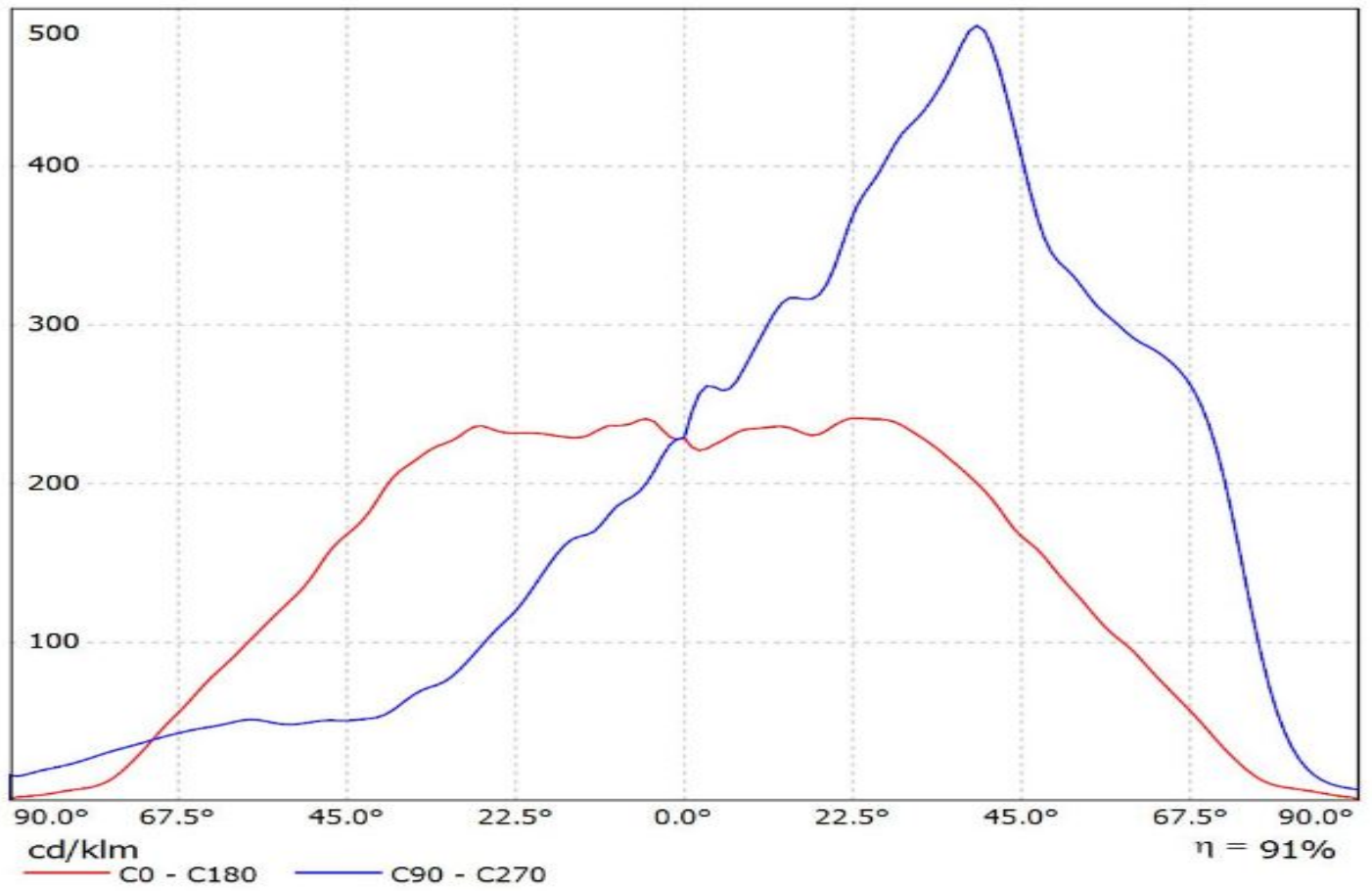
Luminaire: Ledil Oy FN14645_STELLA-T4+_Bender+Wirth 434 Typ Z1_BRIDGELUX_V10_Gen7_SIMULATED
Lamps: 1 x BRIDGELUX V10 Gen7



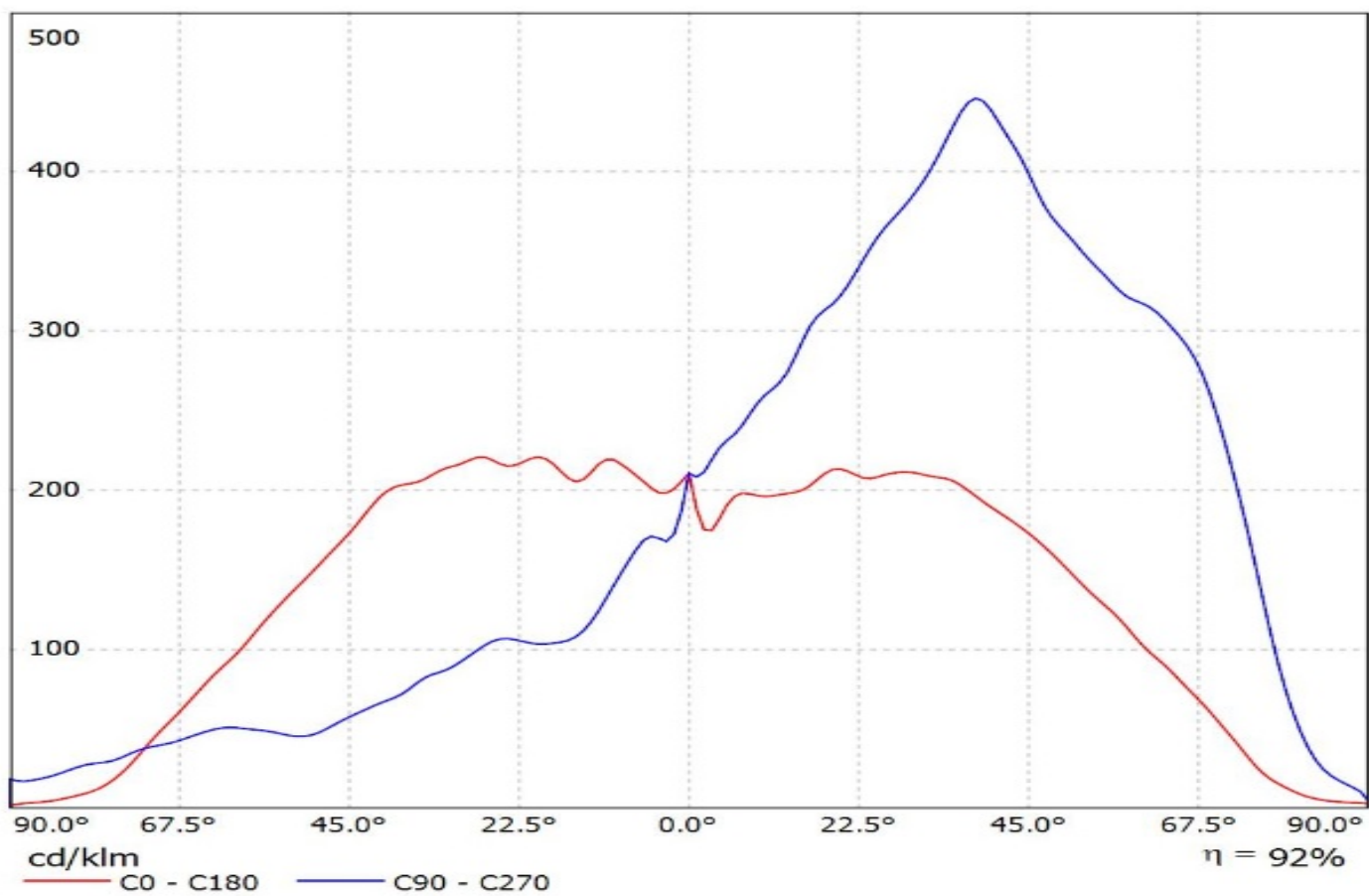
Luminaire: Ledil Oy FN15187_STELLA-T4_Bridgelux_V22_Gen7_SIMULATED FN15187_STELLA-T4_Bridgelux_V22_Gen7_SIMULATED
Lamps: 1 x FN15187_STELLA-T4_Bridgelux_V22_Gen7_SIMULATED



Luminaire: Ledil Oy FN14645_STELLA-T4_BRIDGELUX_V18_Gen7_SIMULATED
Lamps: 1 x BRIDGELUX V10 Gen7

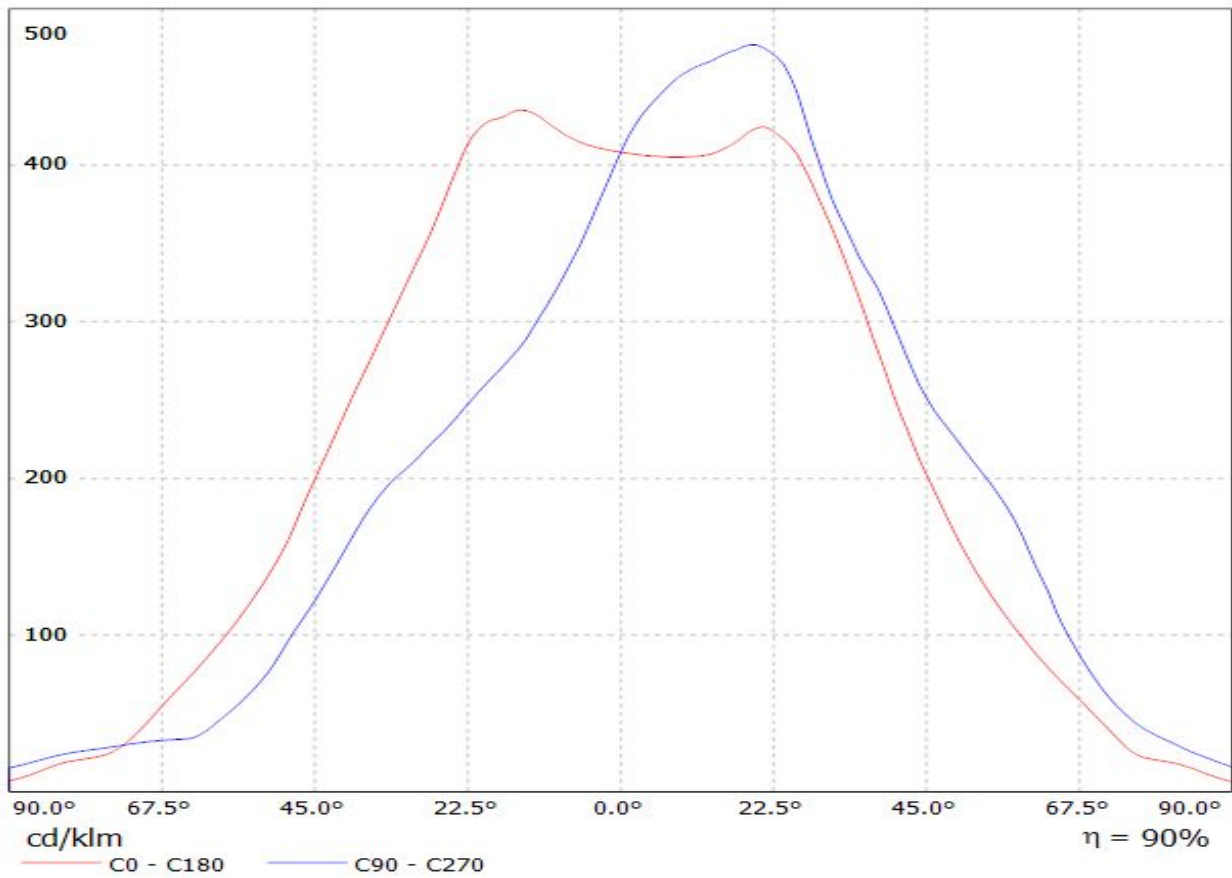


Luminaire: Ledil Oy FN15187_STELLA-T4_(CXA2590)_SIMULATED
Lamps: 1 x Cree CXA2590

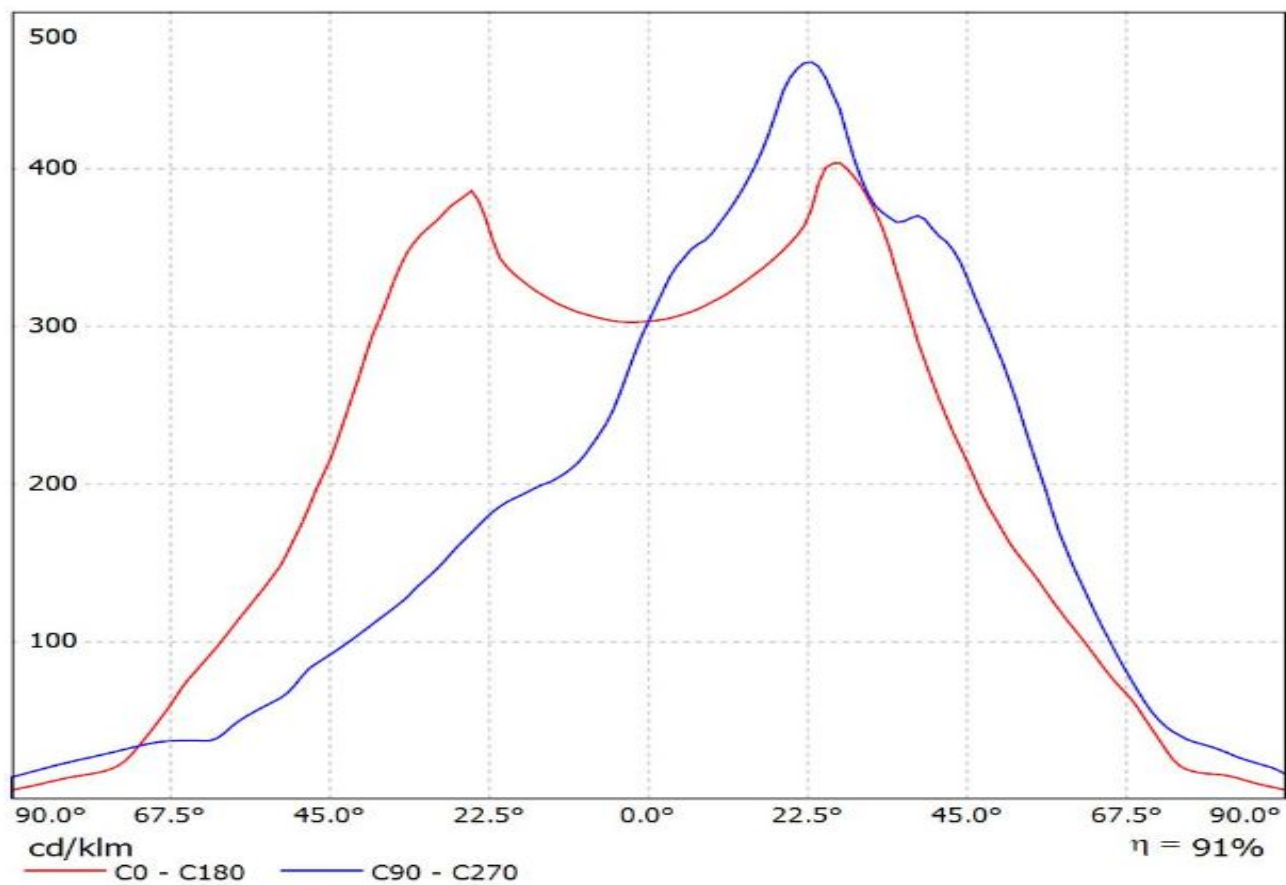


Luminaire: Ledil FN15187_STELLA-T4 (MJT_80W_Les22)_+431TypZ1

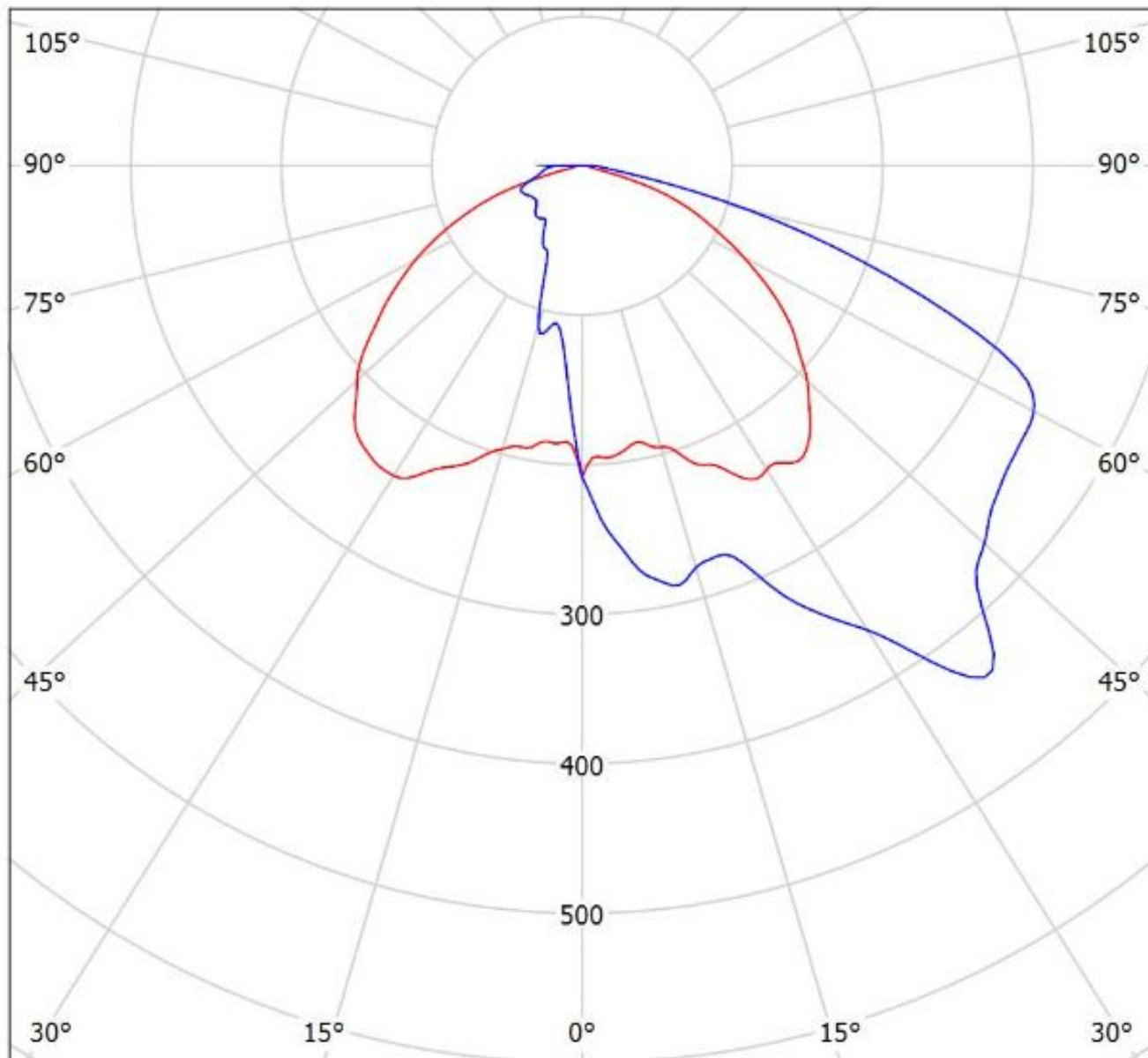
Lamps: 1 x Seoul_MJT_80W_Les22mm_(SAWx22AAA)_+431TypZ1_2501.46lm@250mA_P=13.317W_I=0.25A



Luminaire: Ledil FN15187_STELLA-T4_(MJT_30W_Les14,5)_+433_Typ_Z1
Lamps: 1 x Seoul_MJT_30W_Les14,5mm_(SAWx1566A)_433_Typ_Z1_1343.97lm@250mA_P=8.2295W_I=0.25A



Luminaire: Ledil Oy FN14645_STELLA-T4+_Bender+Wirth 434 Typ Z1_BRIDGELUX_V10_Gen7_SIMULATED
Lamps: 1 x BRIDGELUX V10 Gen7

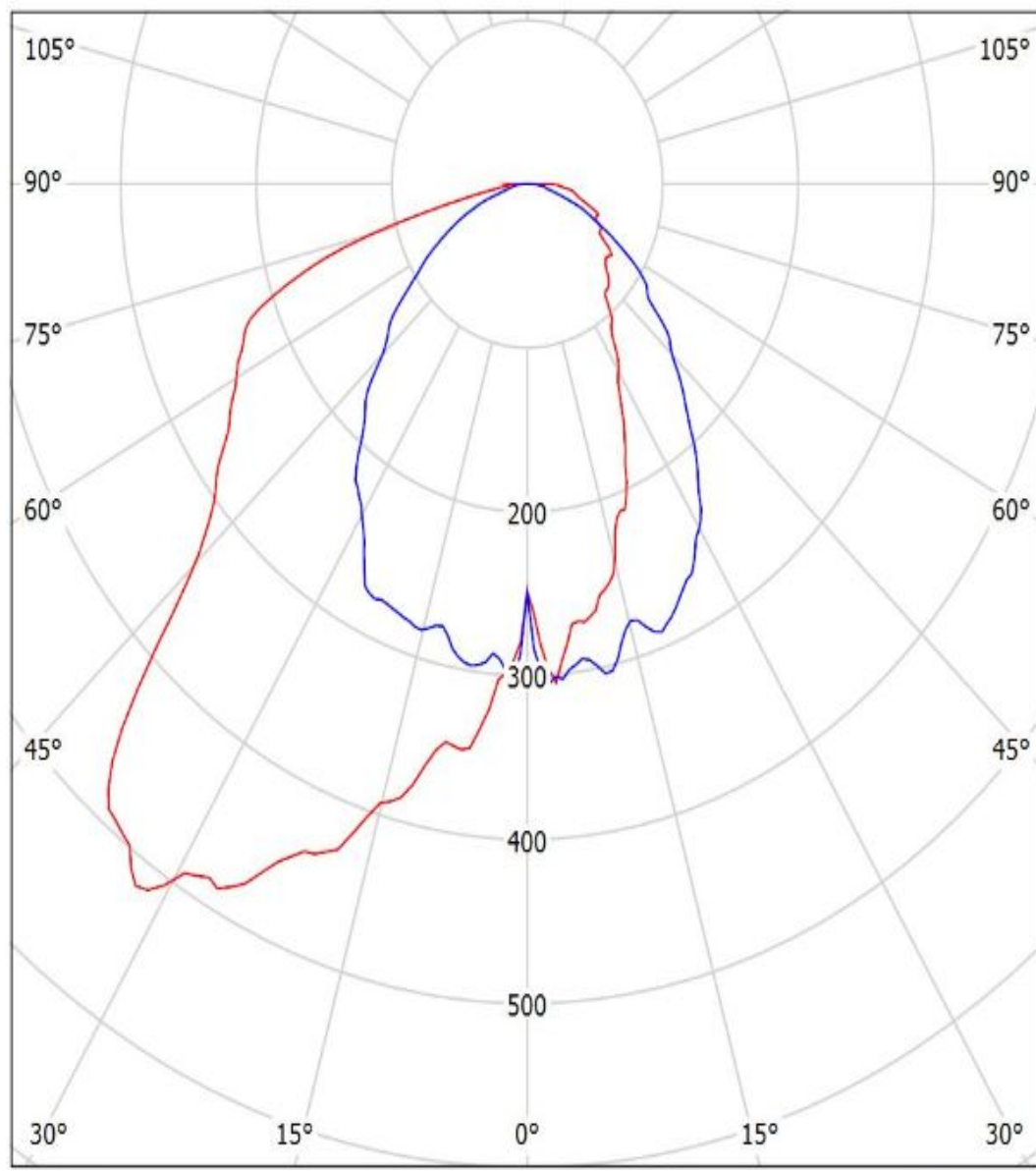


cd/klm

— C0 - C180 — C90 - C270

η = 94%

Luminaire: Ledil Oy FN15187_STELLA-T4_Bridgelux_V22_Gen7_SIMULATED FN15187_STELLA-T4_Bridgelux_V22_Gen7_SIMULATED
Lamps: 1 x FN15187_STELLA-T4_Bridgelux_V22_Gen7_SIMULATED

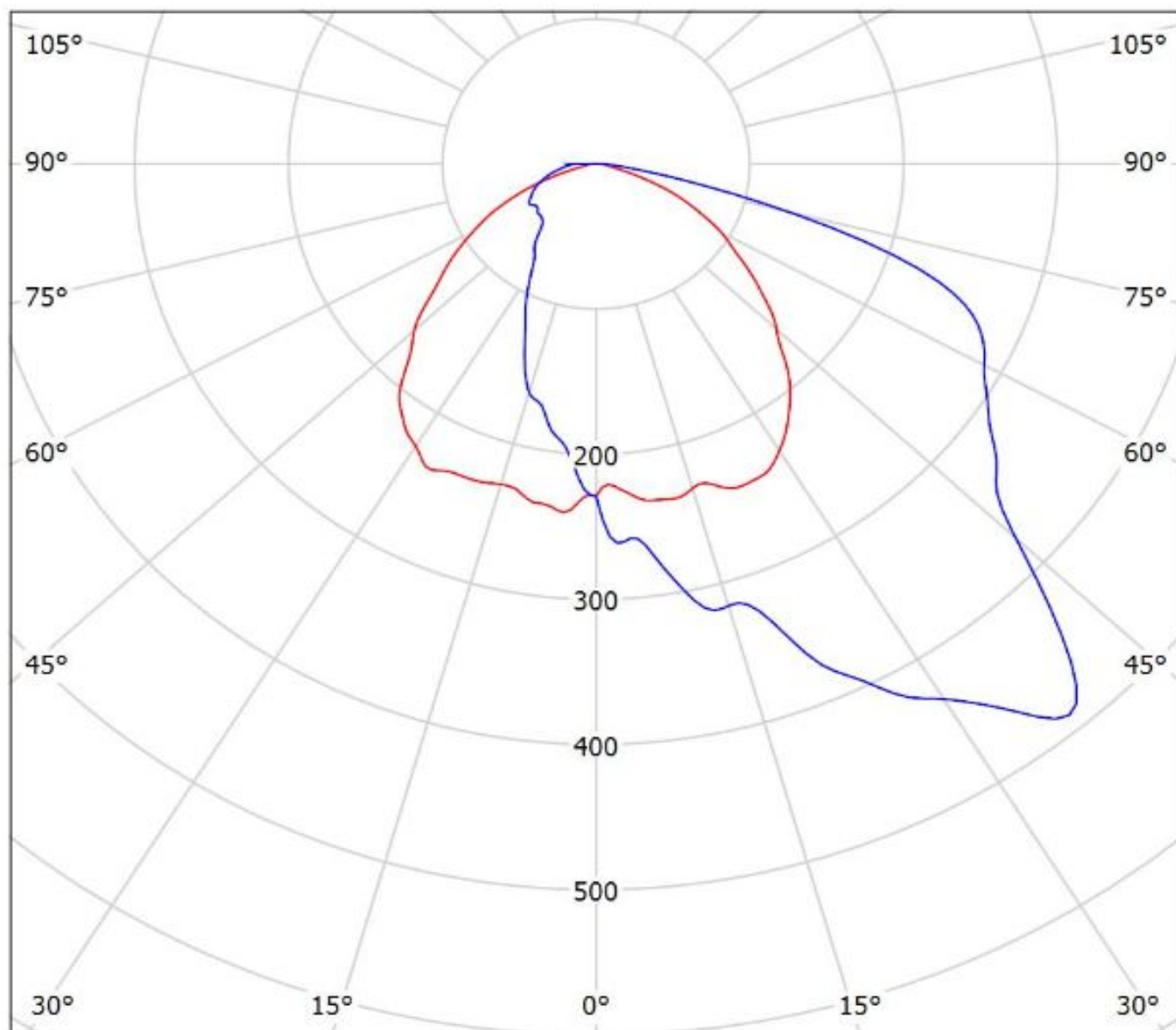


cd/klm

— C0 - C180 — C90 - C270

$\eta = 94\%$

Luminaire: Ledil Oy FN14645_STELLA-T4_BRIDGELUX_V18_Gen7_SIMULATED
Lamps: 1 x BRIDGELUX V10 Gen7

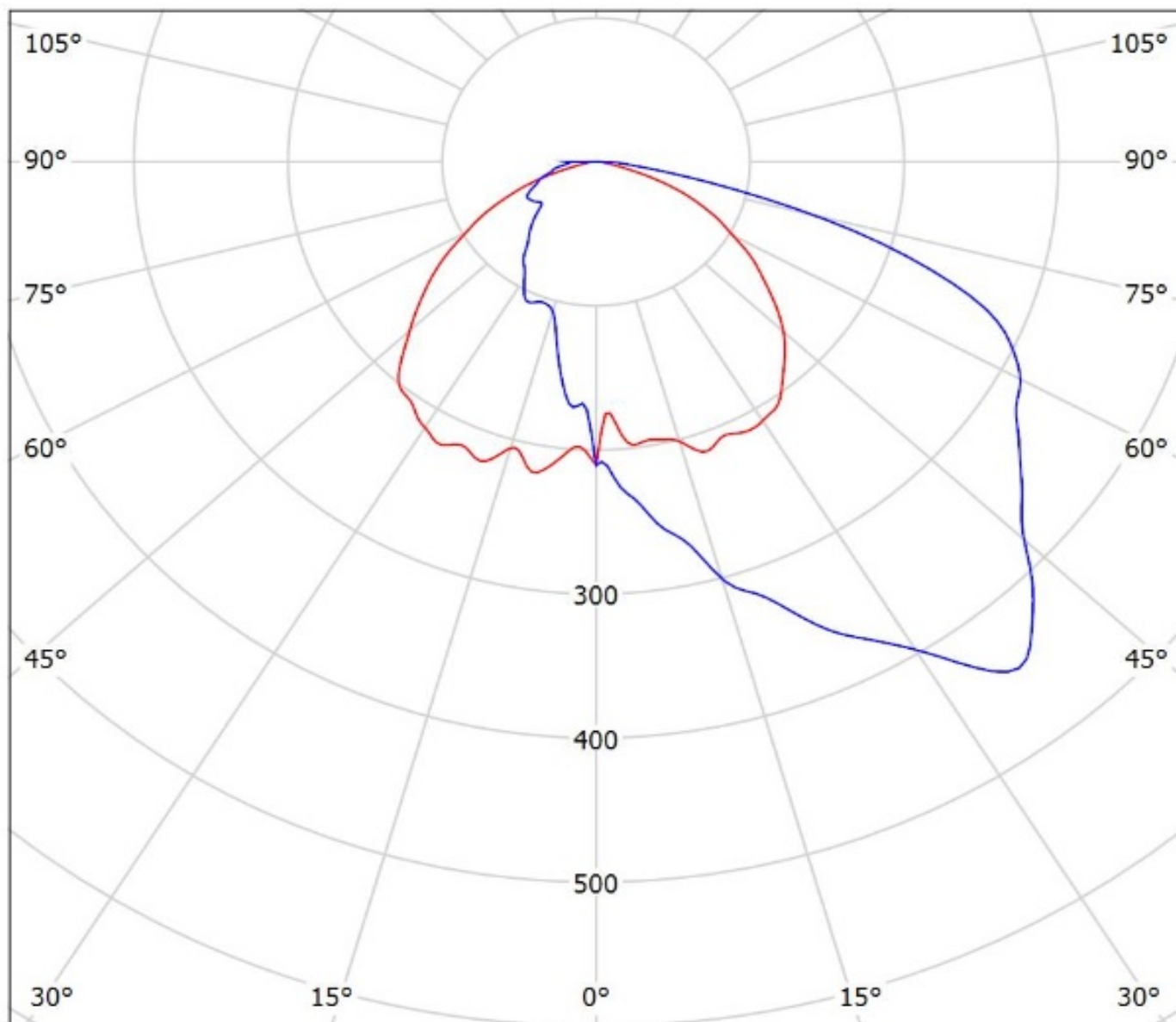


cd/klm

— C0 - C180 — C90 - C270

$\eta = 91\%$

Luminaire: Ledil Oy FN15187_STELLA-T4_(CXA2590)_SIMULATED
Lamps: 1 x Cree CXA2590

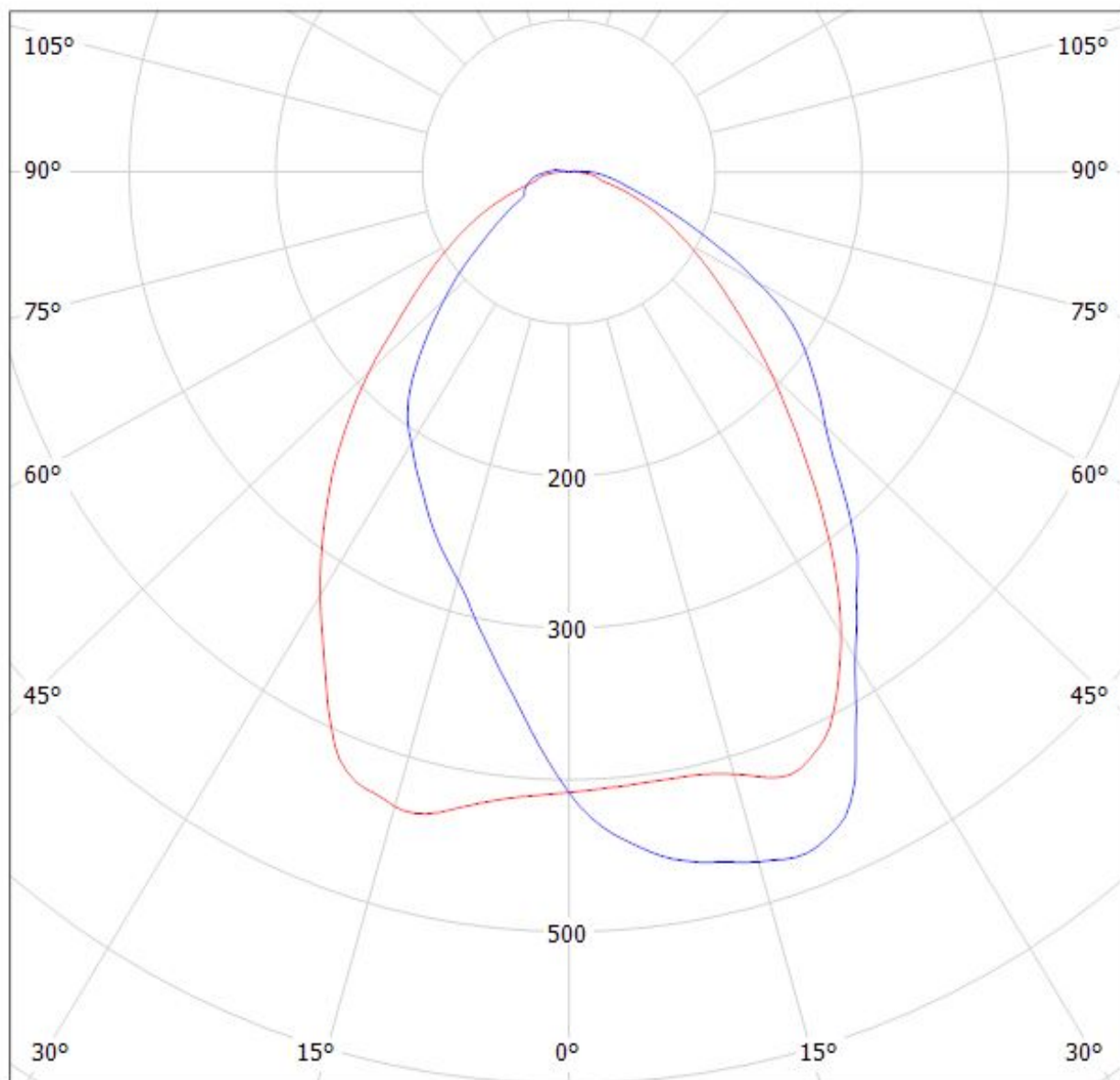


cd/klm
— C0 - C180 — C90 - C270

$\eta = 92\%$

Luminaire: Ledil FN15187_STELLA-T4_(MJT_80W_Les22)_+431TypZ1

Lamps: 1 x Seoul_MJT_80W_Les22mm_(SAWx22AAA)_+431TypZ1_2501.46lm@250mA_P=13.317W_I=0.25A



cd/klm

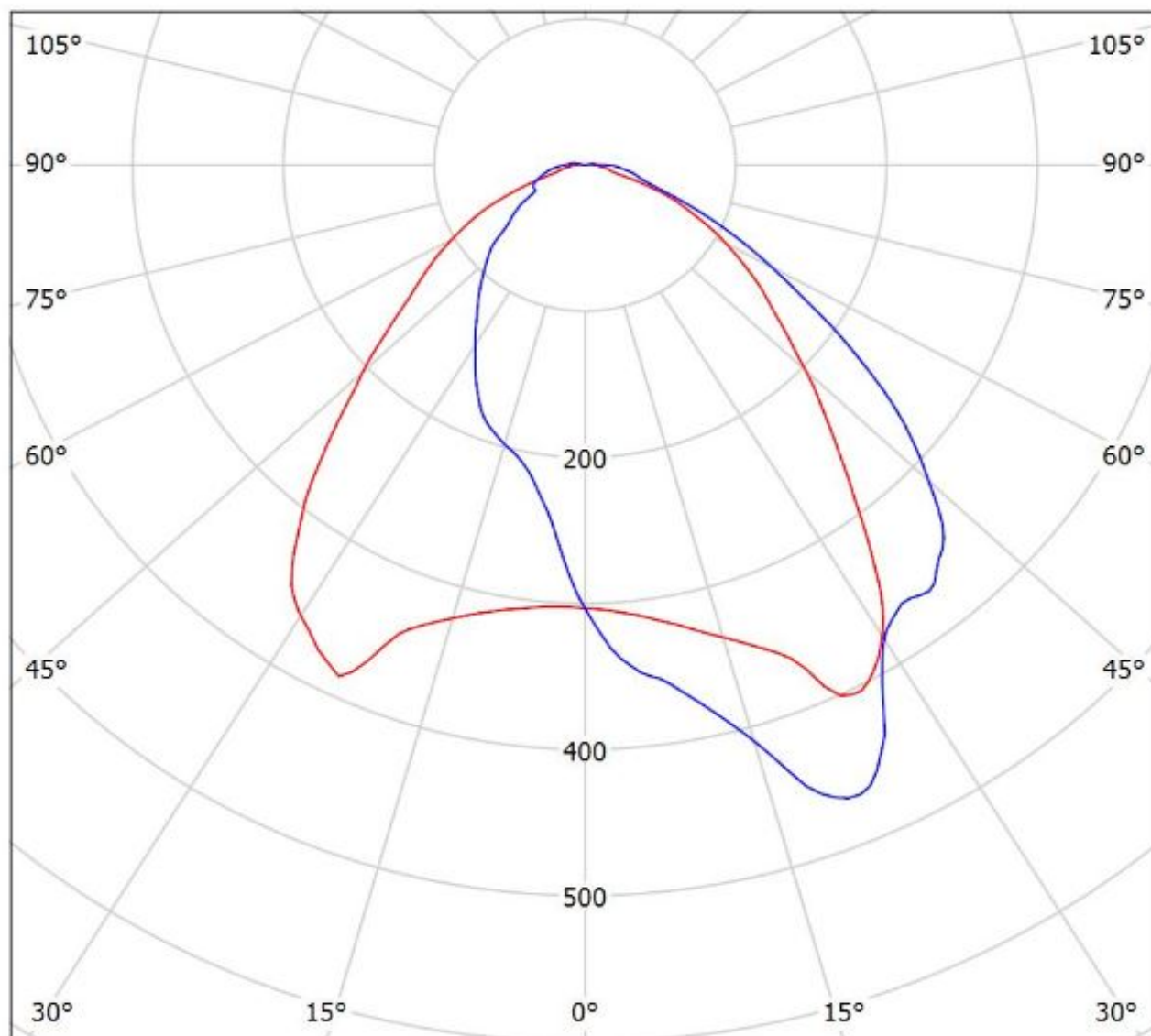
— C0 - C180

— C90 - C270

$\eta = 90\%$

Luminaire: Ledil FN15187_STELLA-T4_(MJT_30W_Les14,5)_+433_Typ_Z1

Lamps: 1 x Seoul_MJT_30W_Les14,5mm_(SAWx1566A)_433_Typ_Z1_1343.97lm@250mA_P=8.2295W_I=0.25A



cd/klm

— C0 - C180 — C90 - C270

$\eta = 91\%$

NOTE: The typical divergence will be changed by different color, chip size and chip position tolerance. The typical total divergence is the full angle measured where the luminous intensity is half of the peak value.

GENERAL INFORMATION

- Product series especially designed & optimized for series of LEDs.
- Special care taken to make light distribution as uniform as possible.

Note! Due to use of high power COB's with this product, special attention to proper thermal design is highly recommended. LEDiL has no liability for direct, indirect or consecutive damages arising from the LEDiL products being used outside of the recommended temperature range.