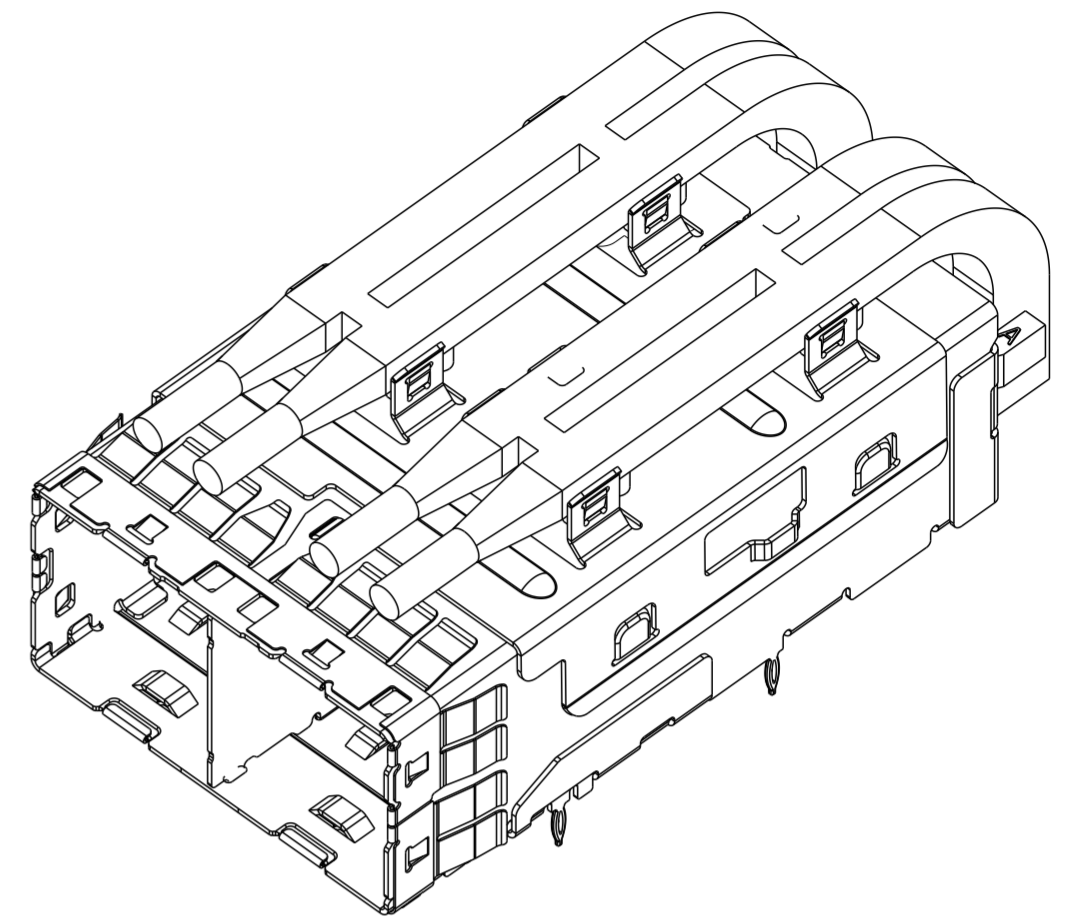
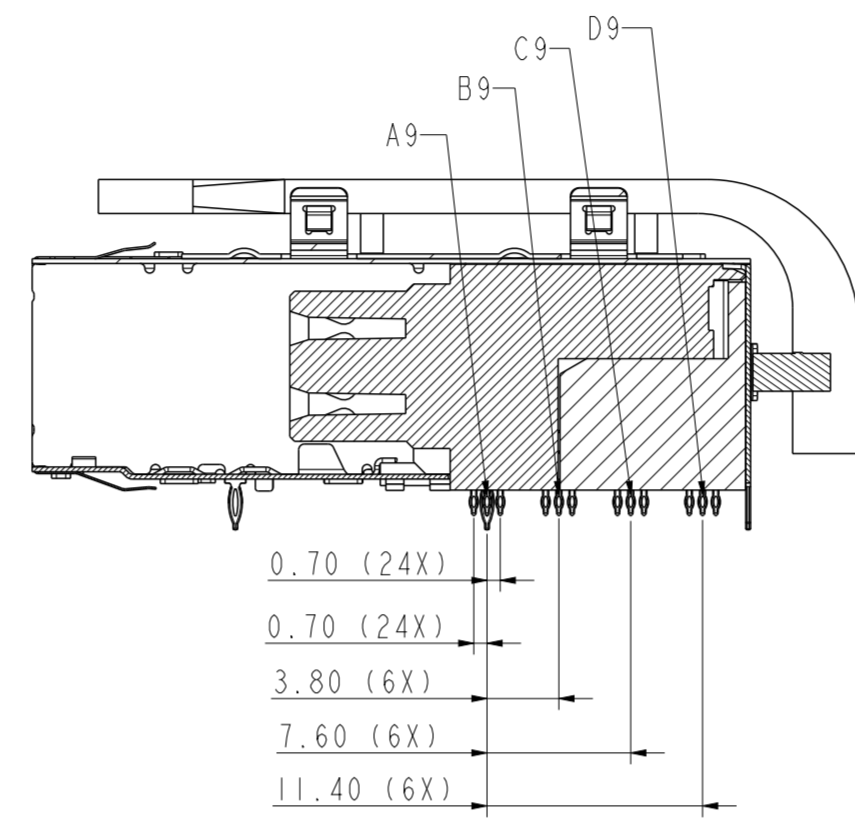
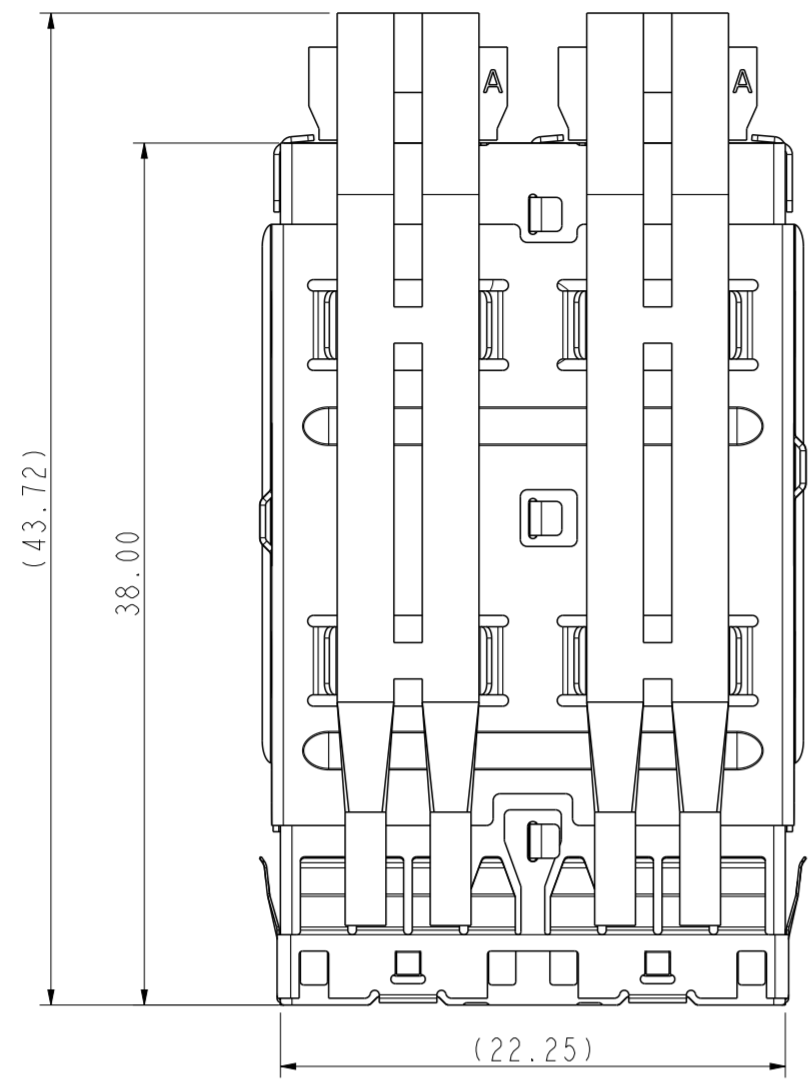
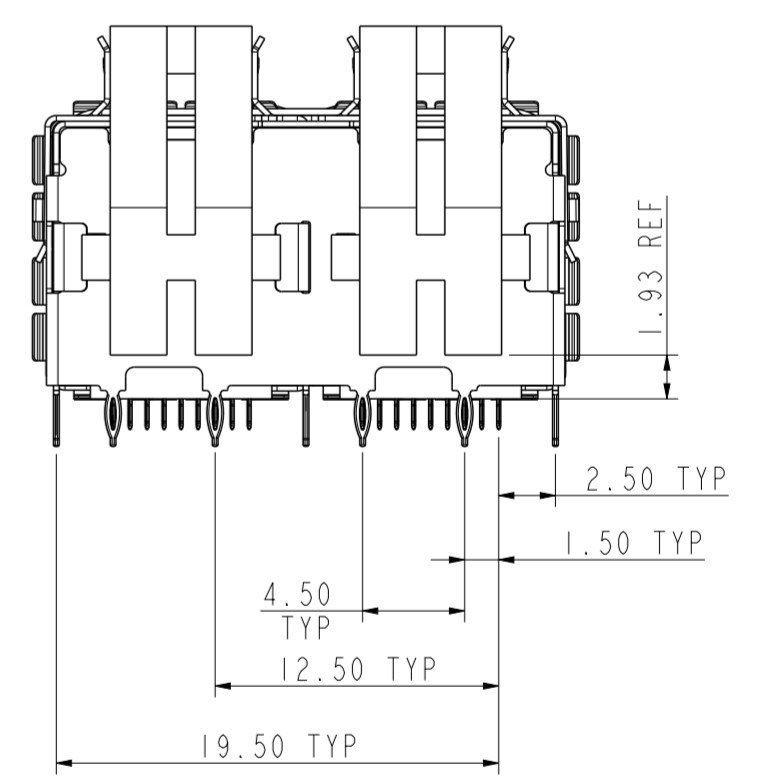
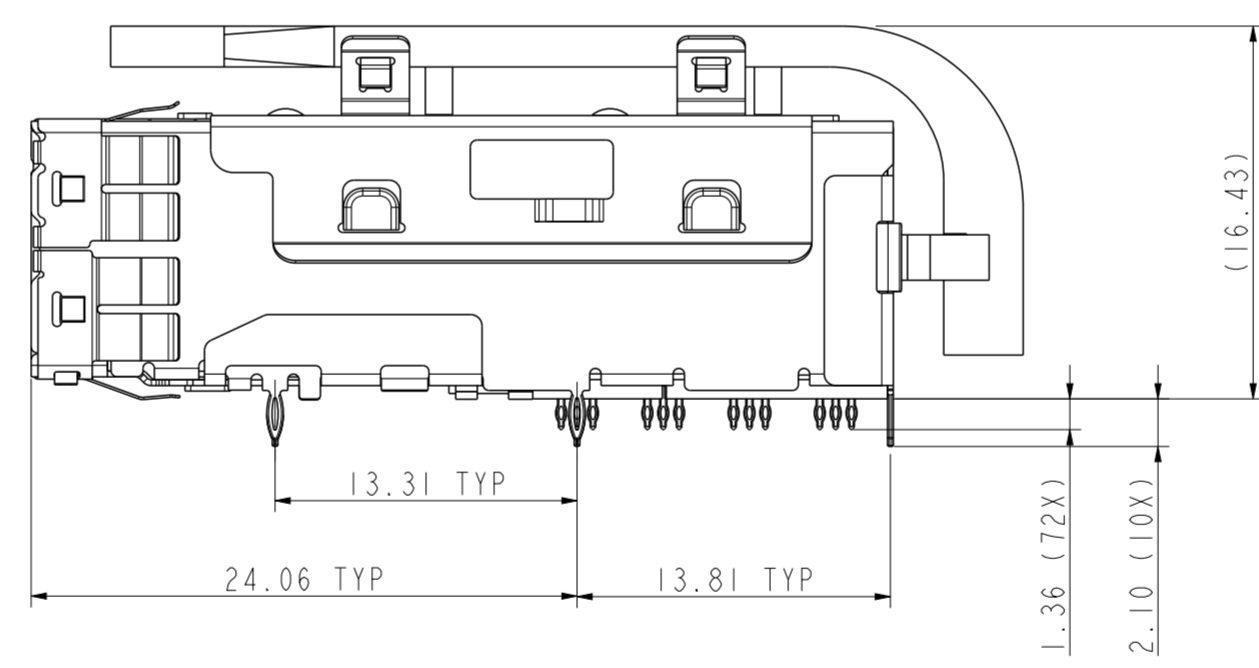
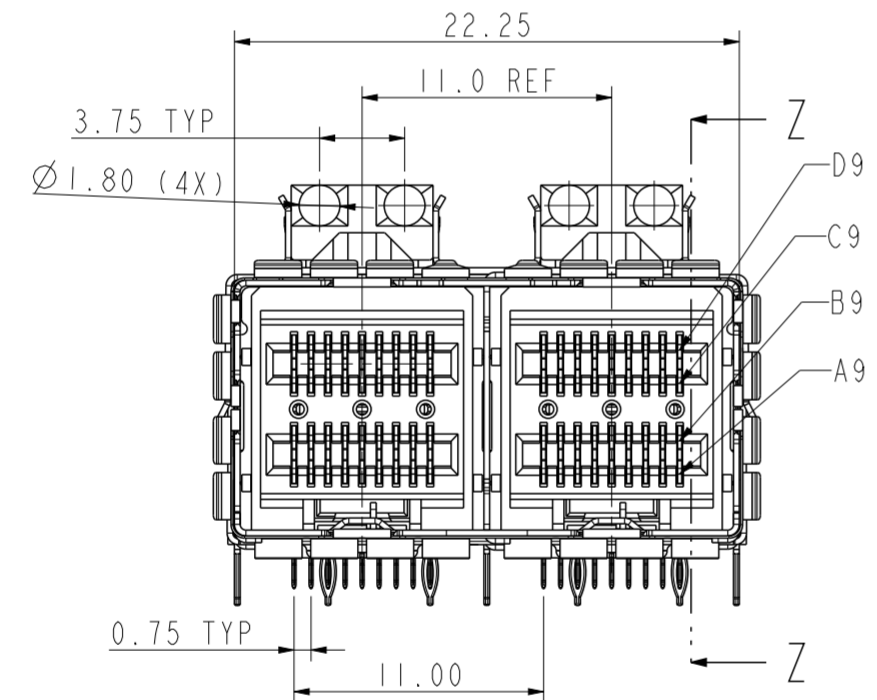


PRODUCT NUMBER	TAIL PLATING OPTION, SEE NOTE 2	1X2 EXTERNAL ASSEMBLY	1X2 LIGHT PIPE SUB-ASSEMBLY WITH MOUNTING CLIP
10120959-101	OPTION 1	10112627-101	10121257-001LF
10120959-101LF	OPTION 2	10112627-101LF	



10120959-101 & 101LF WITH LIGHT PIPES



NOTES:

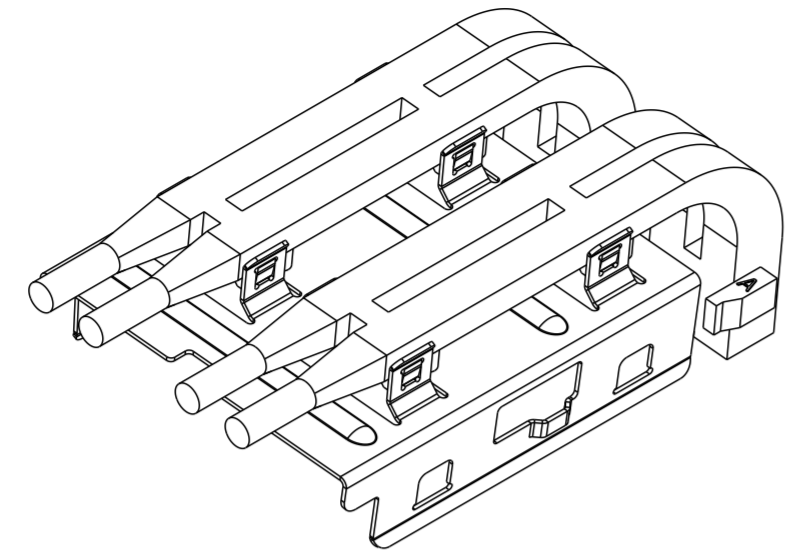
- MATERIALS:
CONNECTOR HOUSING: HIGH TEMPERATURE THERMOPLASTIC
GLASS FILLED, UL 94V-0
EMI CAGE: NICKEL SILVER ALLOY
EMI FINGERS: COPPER ALLOY
TERMINALS: COPPER ALLOY
LIGHT PIPE CLIP: STAINLESS STEEL
LIGHT PIPE: POLYCARBONATE
- FINISHES:
EMI FINGERS: 0.50um MIN NICKEL
CONTACT AREA: 0.76um MIN GOLD OVER 2.54um MIN NICKEL
TAIL AREA:
OPTION 1: 0.76um - 1.52um TIN/LEAD (90/10) OVER 2.54um MIN NICKEL
OPTION 2: 0.76um - 1.52um TIN (LEAD FREE) OVER 2.54um MIN NICKEL
- PRODUCT SPECIFICATION: GS-12-651
- PRODUCT PACKING SPECIFICATION: GS-14-1490
EXTERNAL ASSEMBLY WILL BE IN ONE BOX.
LIGHT PIPE SUB-ASSEMBLY WITH MOUNTING CLIP WILL BE IN ONE BOX.
BOTH BOXES WILL BE IN A MASTER CARTON.
- APPLICATION SPECIFICATION: GS-20-0327
- MOUNTING HARDWARE: M2X0.4 BUTTON HEAD SCREW
MOUNTING SCREW LENGTH: BOARD THICKNESS + 1.4mm MAX (0.9mm MIN).
2 REQUIRED PER ASSEMBLY.
MOUNTING HARDWARE NOT SUPPLIED.
- THIS CONNECTOR IS DESIGNED TO MEET THE REQUIREMENTS OF INDUSTRY SPECIFICATION SFF-8644.
- LIGHT PIPE SUB-ASSEMBLY WITH MOUNTING CLIP FINAL ASSEMBLY AFTER EXTERNAL ASSEMBLY APPLIED TO PCB.

MATES WITH MINI-SAS HD ENDS IN:

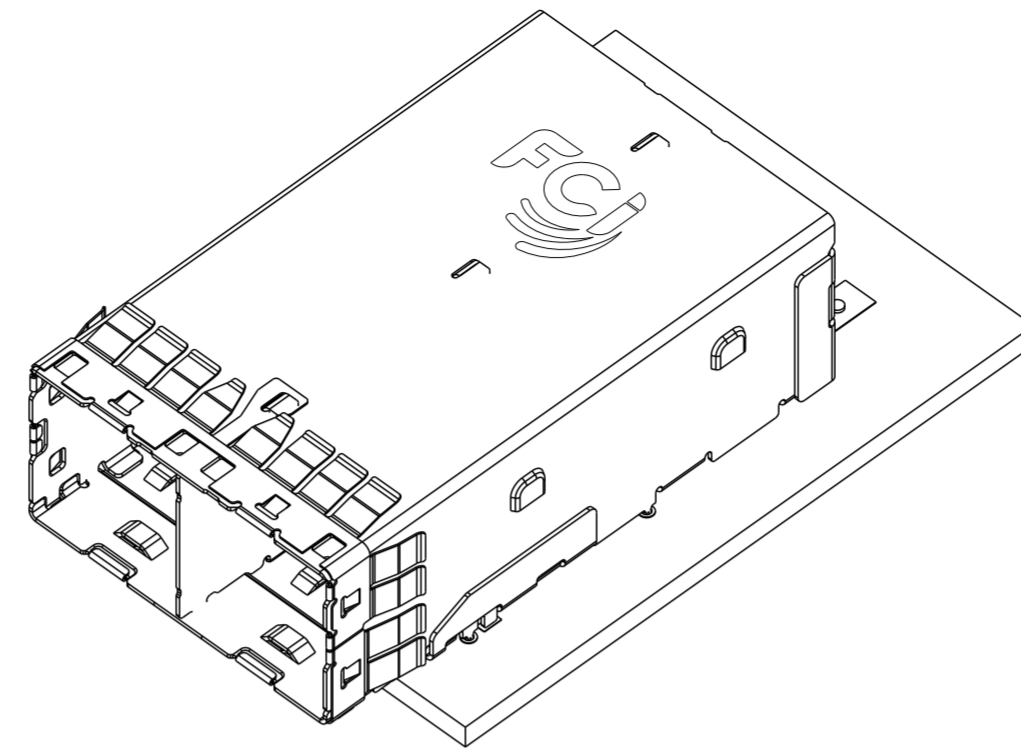
10112041 SERIES (4X)
10117771 SERIES (4X)
10117946 SERIES (4X)
10117949 SERIES (4X)
10117947 SERIES (8X)
10112359 SERIES (8X)
10117950 SERIES (8X)
10117948 SERIES (8X)

spec ref	-	dr	Qin De-Feng	2012/1/21	projection	MM	size	A2	scale	2.000
tolerance std	ISO 406 ISO 1101	eng	Qin De-Feng	2013/03/11			ecn no	-	rel level	Released
surface	ISO 1302	chr	Jon Qin	2013/03/11						
linear	0.X ±0.5 0.XX ±0.3 0.XXX ±	appr	Pei-Ming Zheng	2013/03/11	dwg no	10120959	rev	A	cat. no.	-
angular	0° ±3°	www.fci.com		Product - Customer Drw		sheet 1 of 6				

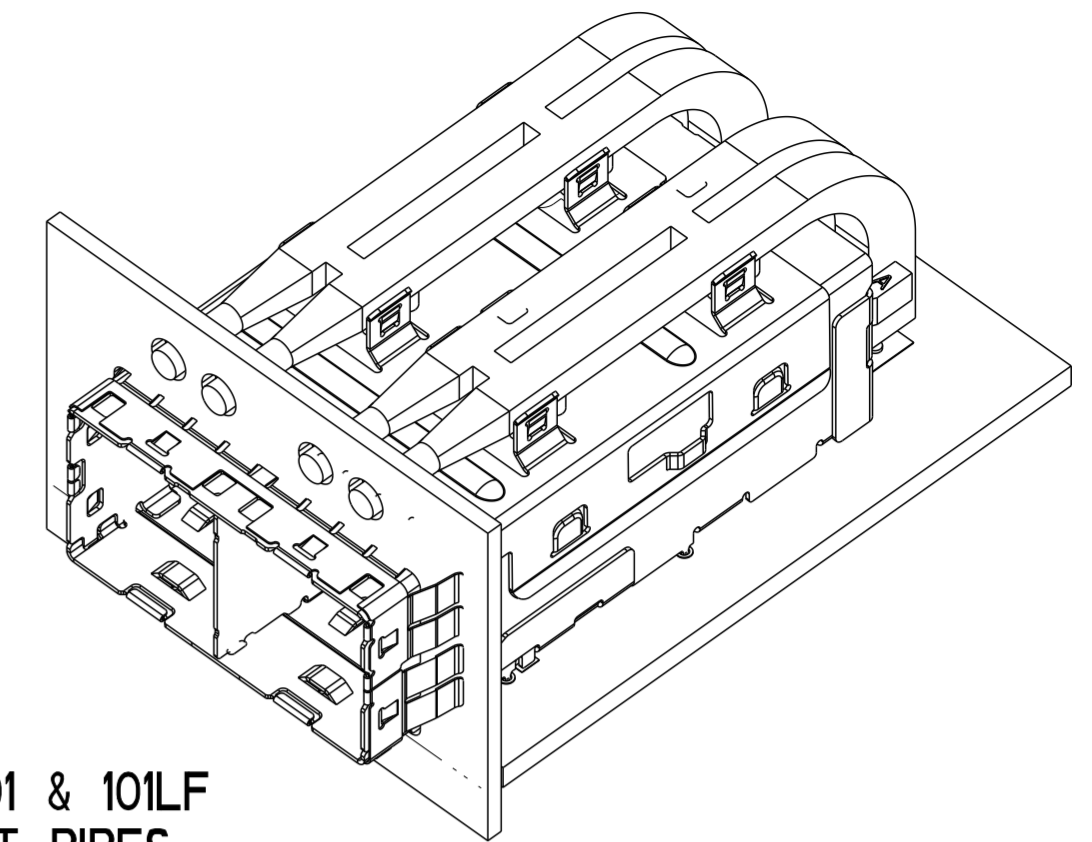
Copyright FCI



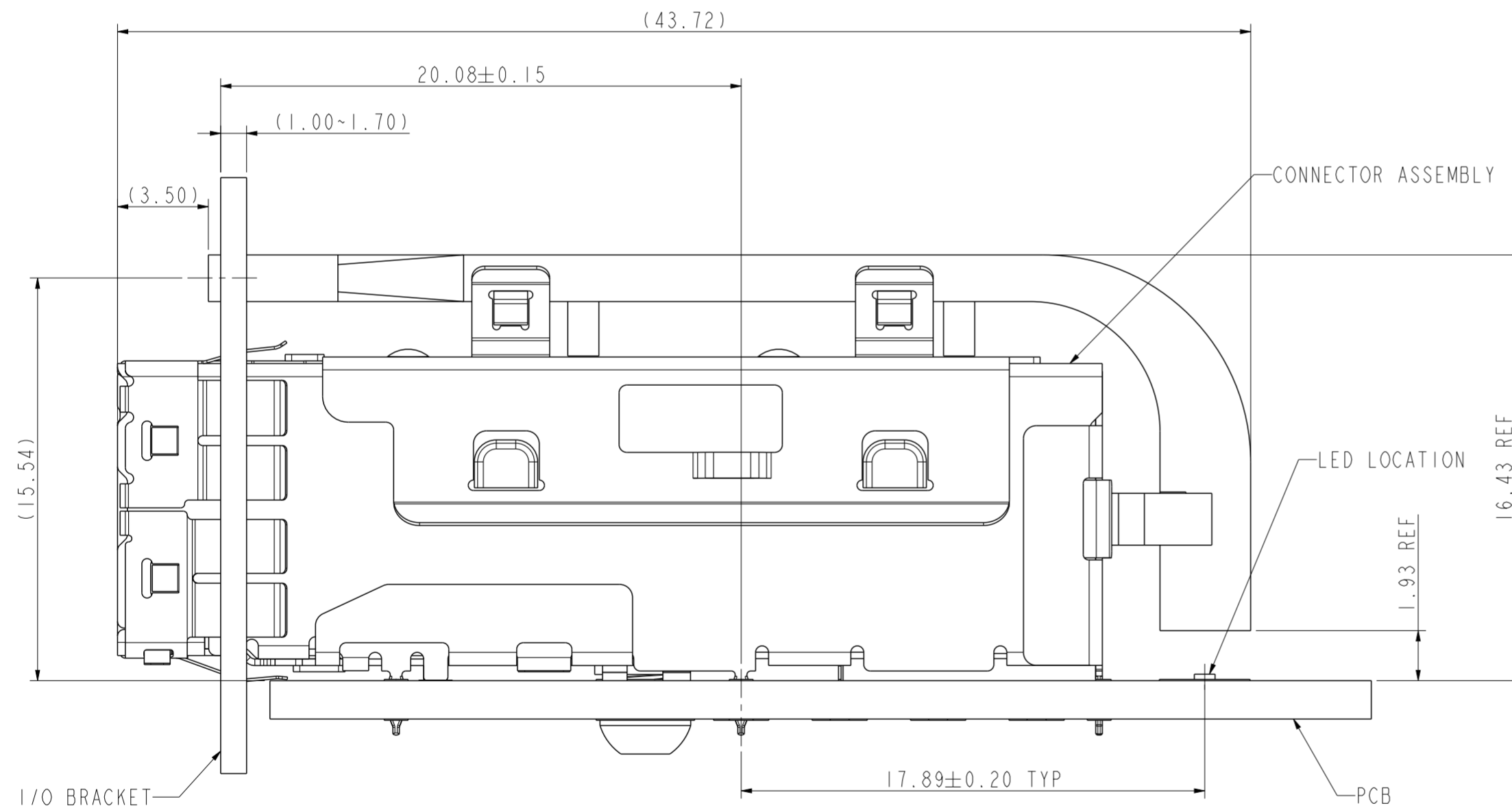
1X2 LIGHT PIPE SUB-ASSEMBLY
WITH MOUNTING CLIP
10121257-001LF



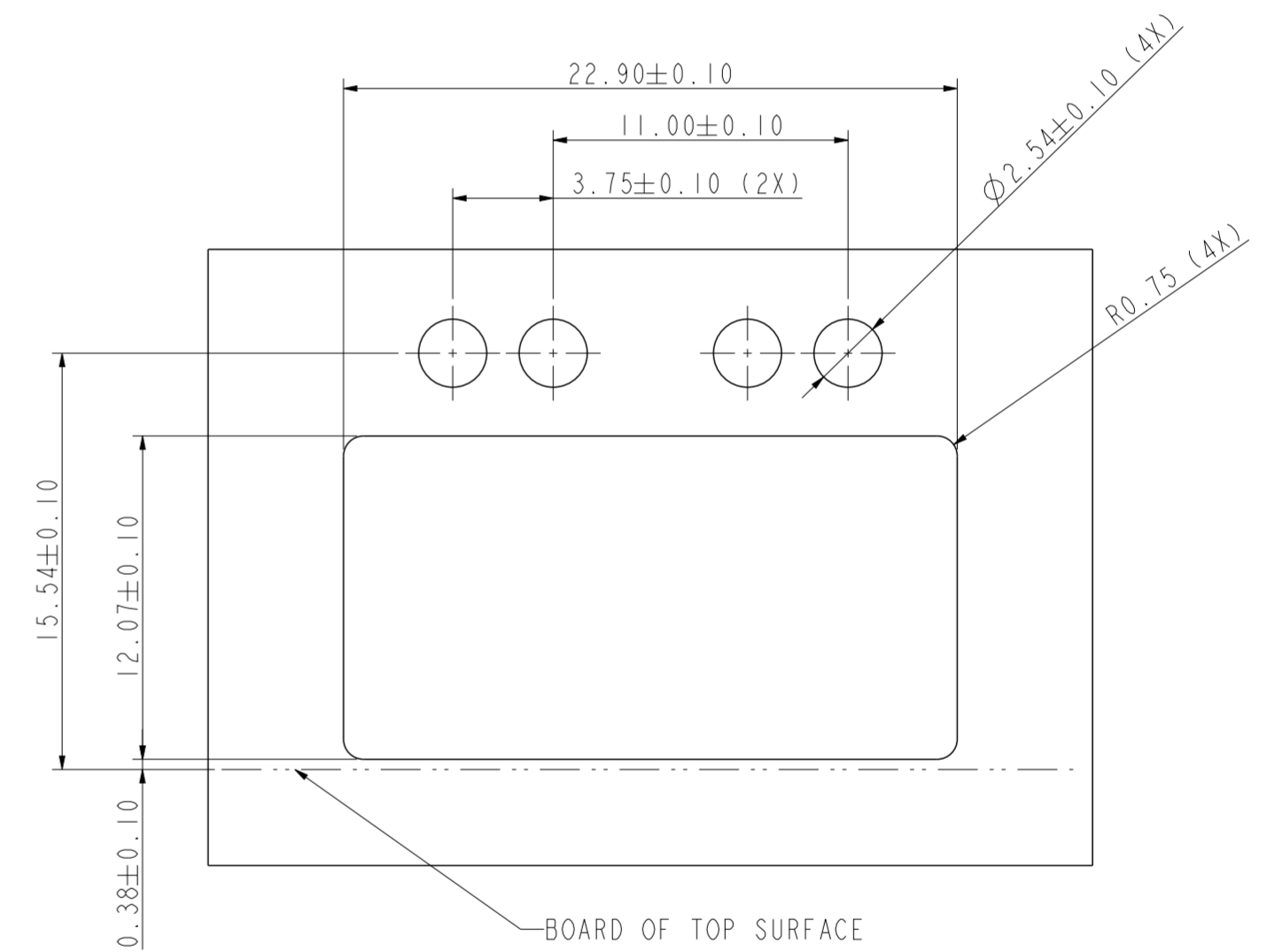
1X2 EXTERNAL ASSEMBLY
APPLIED TO PCB
10112627-101 & 101LF



10120959-101 & 101LF
WITH LIGHT PIPES
(LIGHT PIPE SUB-ASSEMBLY
WITH MOUNTING CLIP FINAL
ASSEMBLY BY CUSTOMER)



ASSEMBLED VIEW
WITH LIGHT PIPES
SCALE 5:1

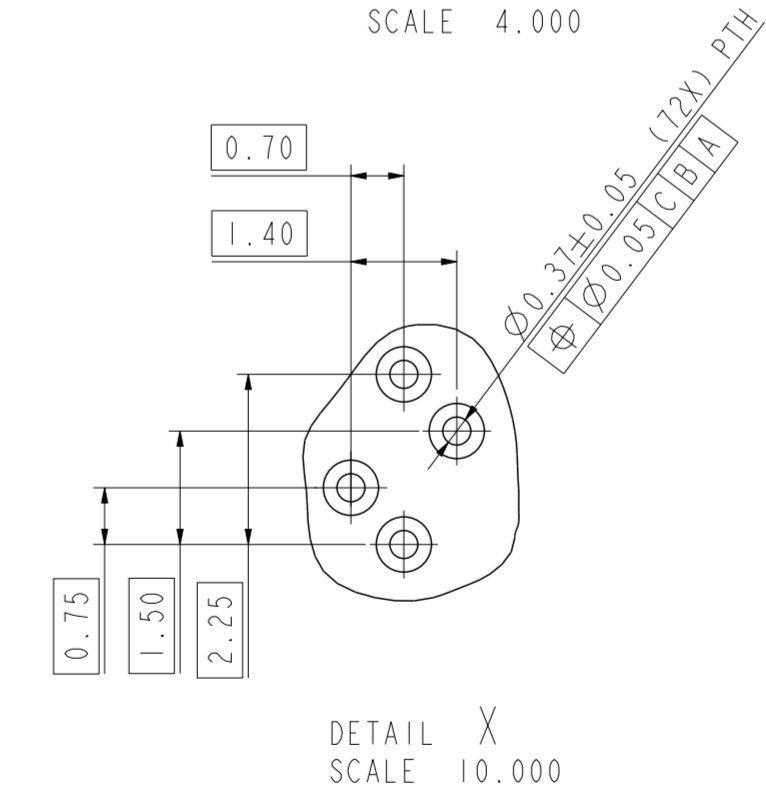
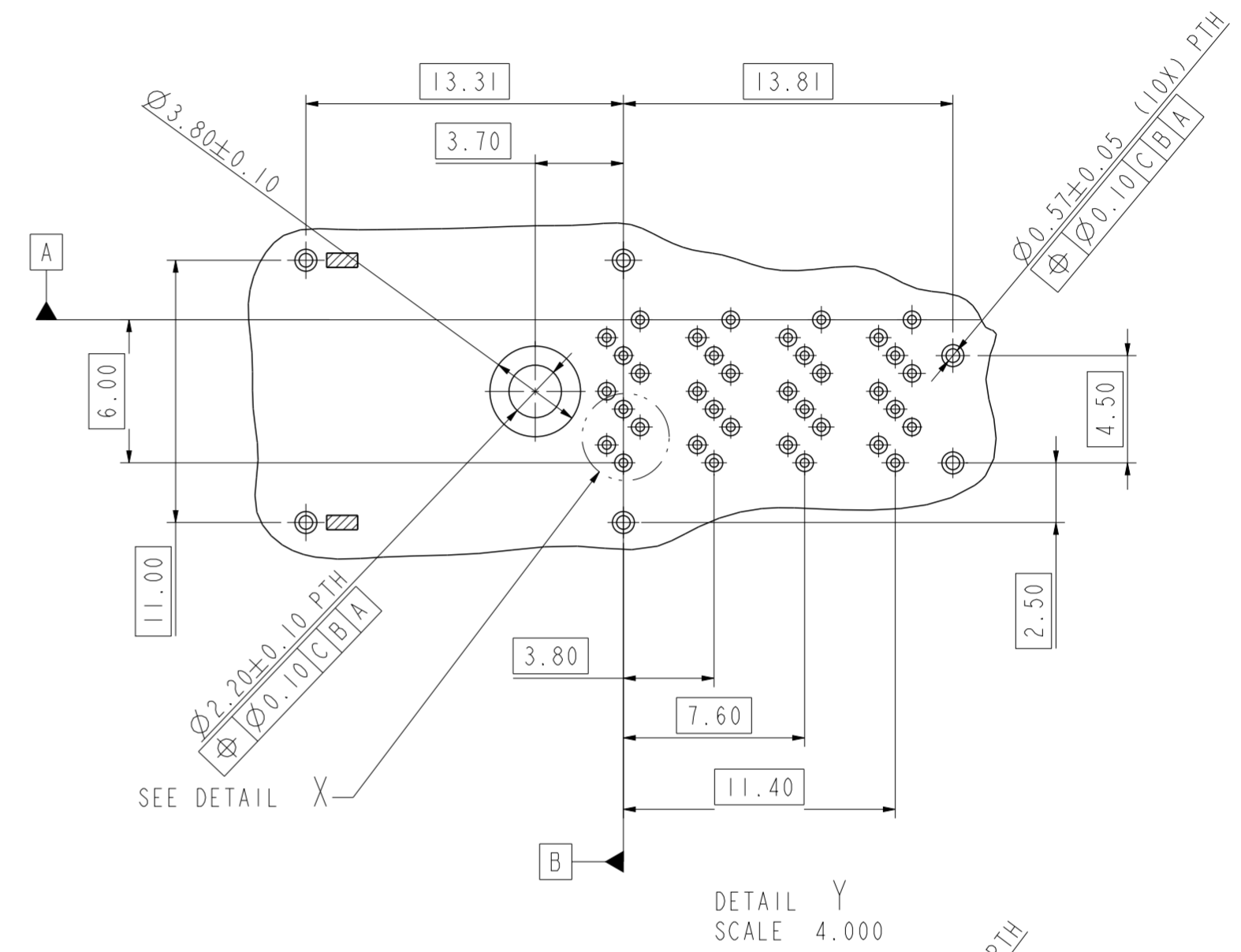
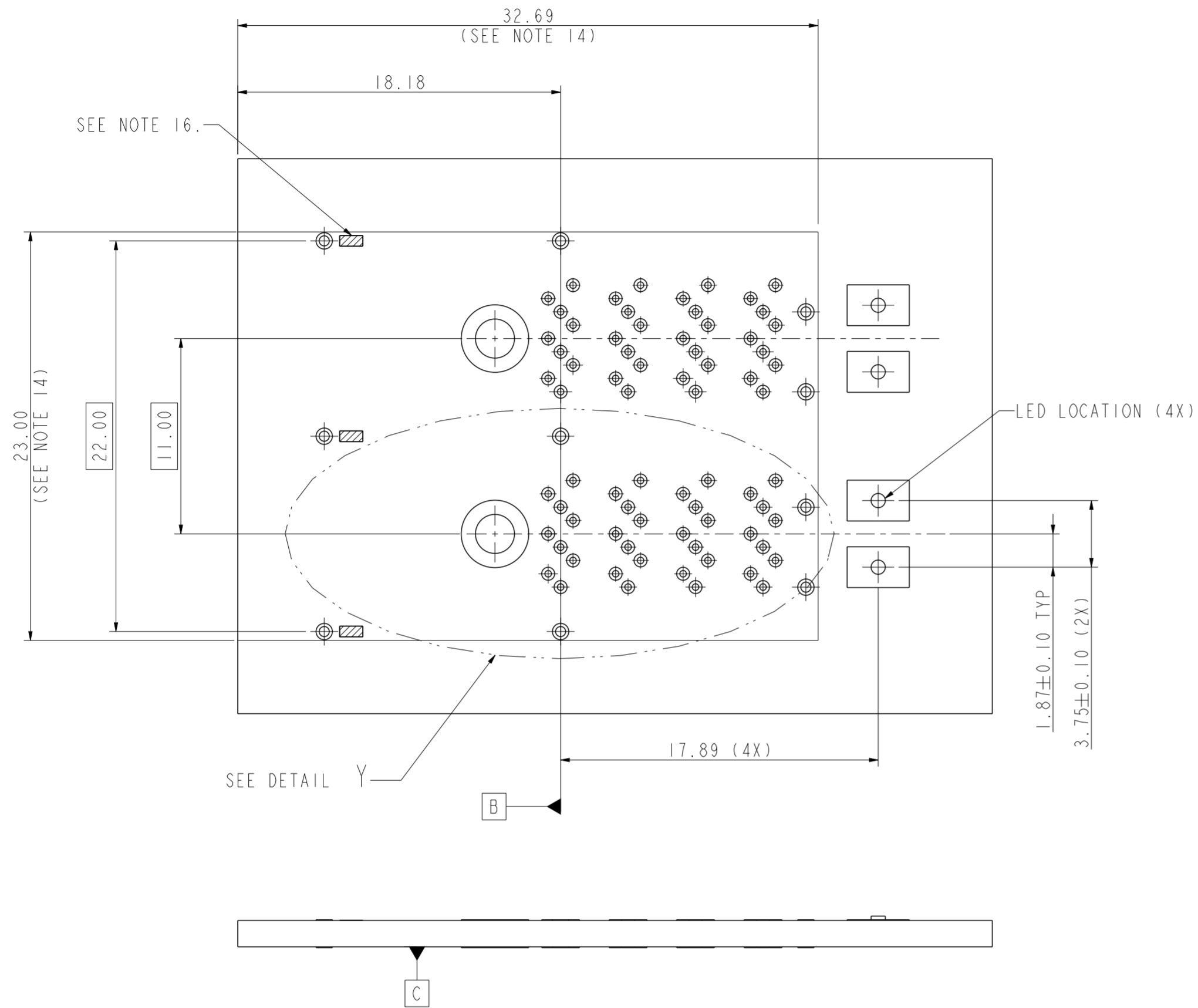


I/O BRACKET CUT OUT
(BRACKET NOT INCLUDED)

SCALE 4.000

Copyright FCI.

spec ref	-	dr	Qin De-Feng	2012/1/21	projection	MM	size	A2	scale	1.000
tolerance std	ISO 406 ISO 1101	eng	Qin De-Feng	2013/03/11			ecn no	-	rel level	Released
TOLERANCES UNLESS OTHERWISE SPECIFIED		chr	Jon Qin	2013/03/11						
surface	ISO 1302	appr	Pei-Ming Zheng	2013/03/11	product family	MINI-SAS HD	dwg no	10120959	rev	A
	linear	0.X	±0.5		www.fci.com	cat. no.	Product - Customer Drw	sheet 2 of 6		
		0.XX	±0.3							
		0.XXX	±							
	angular	0°	±3°							



RECOMMENDED BOARD LAYOUT
SEE SFF-8644 FOR DETAIL

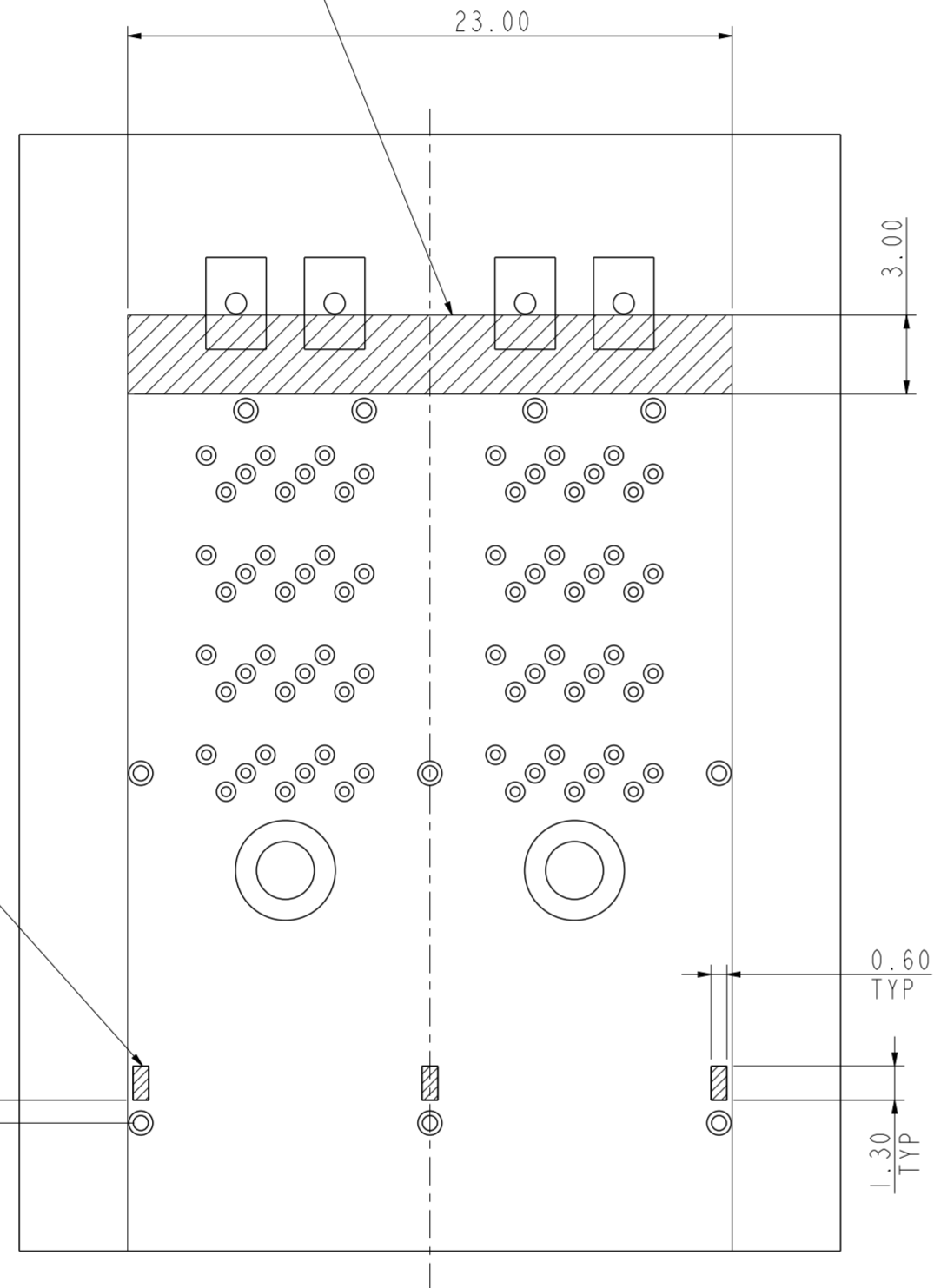
NOTES:

9. RECOMMENDED DRILL SIZE FOR Ø0.37 FINISHED PTH IS Ø0.457.
10. RECOMMENDED ANNULAR RING AROUND Ø0.37 FINISHED PTH IS Ø0.73.
11. RECOMMENDED DRILL SIZE FOR Ø0.57 FINISHED PTH IS Ø0.68.
12. RECOMMENDED ANNULAR RING AROUND Ø0.57 FINISHED PTH IS Ø0.93.
13. MINIMUM RECOMMENDED CENTER TO CENTER SPACING BETWEEN ADJACENT CONNECTORS: 25.00mm.
14. CONNECTOR KEEP OUT AREA.
15. MINIMUM PCB THICKNESS: 1.57mm.
16. CAGE STAND OFF AREA, NO TRACES ON SURFACE OF PCB IN THE AREAS.

spec ref	-	dr	Qin De-Feng	2012/1/21	projection	MM	size	A2	scale	1.000
tolerance std	ISO 406 ISO 1101	eng	Qin De-Feng	2013/03/11			ecn no	-	rel level	Released
TOLERANCES UNLESS OTHERWISE SPECIFIED		chr	Jon Qin	2013/03/11						
surface	ISO 1302	appr	Pei-Ming Zheng	2013/03/11	product family	MINI-SAS HD	dwg no	10120959	rev	A
	linear	0.X	±0.5		title		1X2 EXTERNAL ASSEMBLY WITH LIGHT PIPE		sheet 3 of 6	
		0.XX	±0.3		MINI-SAS HD		Product - Customer Drw		STATUS:Released	
	angular	0°	±3°		cat. no.		Printed: Mar 12, 2013		PDS: Rev :A	

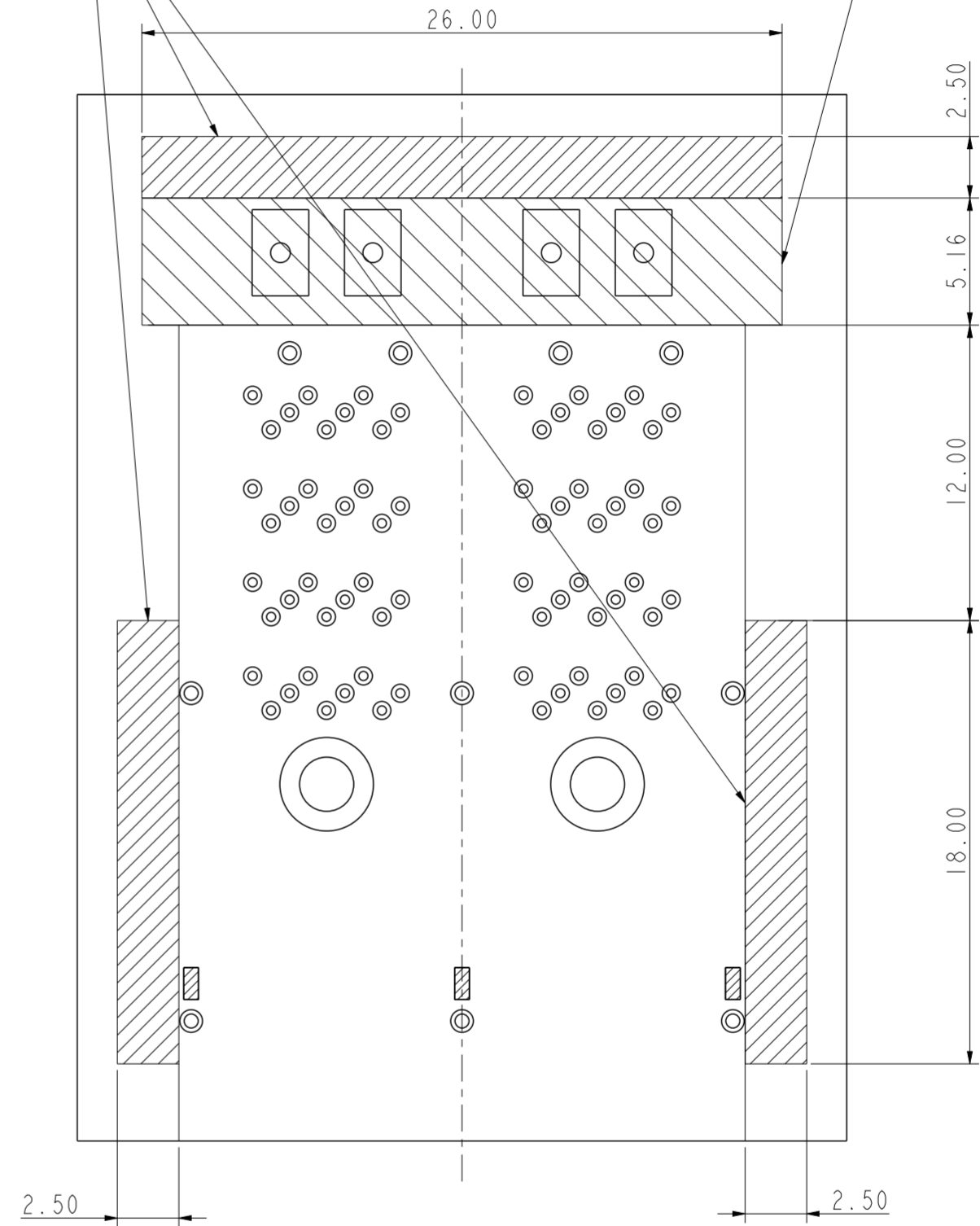
RECOMMENDED KEEP OUT AREAS

RECOMMENDED INSERTION TOOL
KEEP OUT AREA
NO COMPONENTS IN THIS AREA
MORE THAN 7.50mm TALL



RECOMMENDED EXTRACTION TOOL
KEEP OUT AREA
NO COMPONENTS IN THESE AREAS

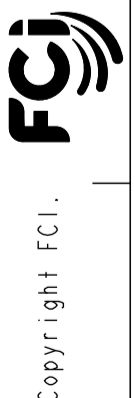
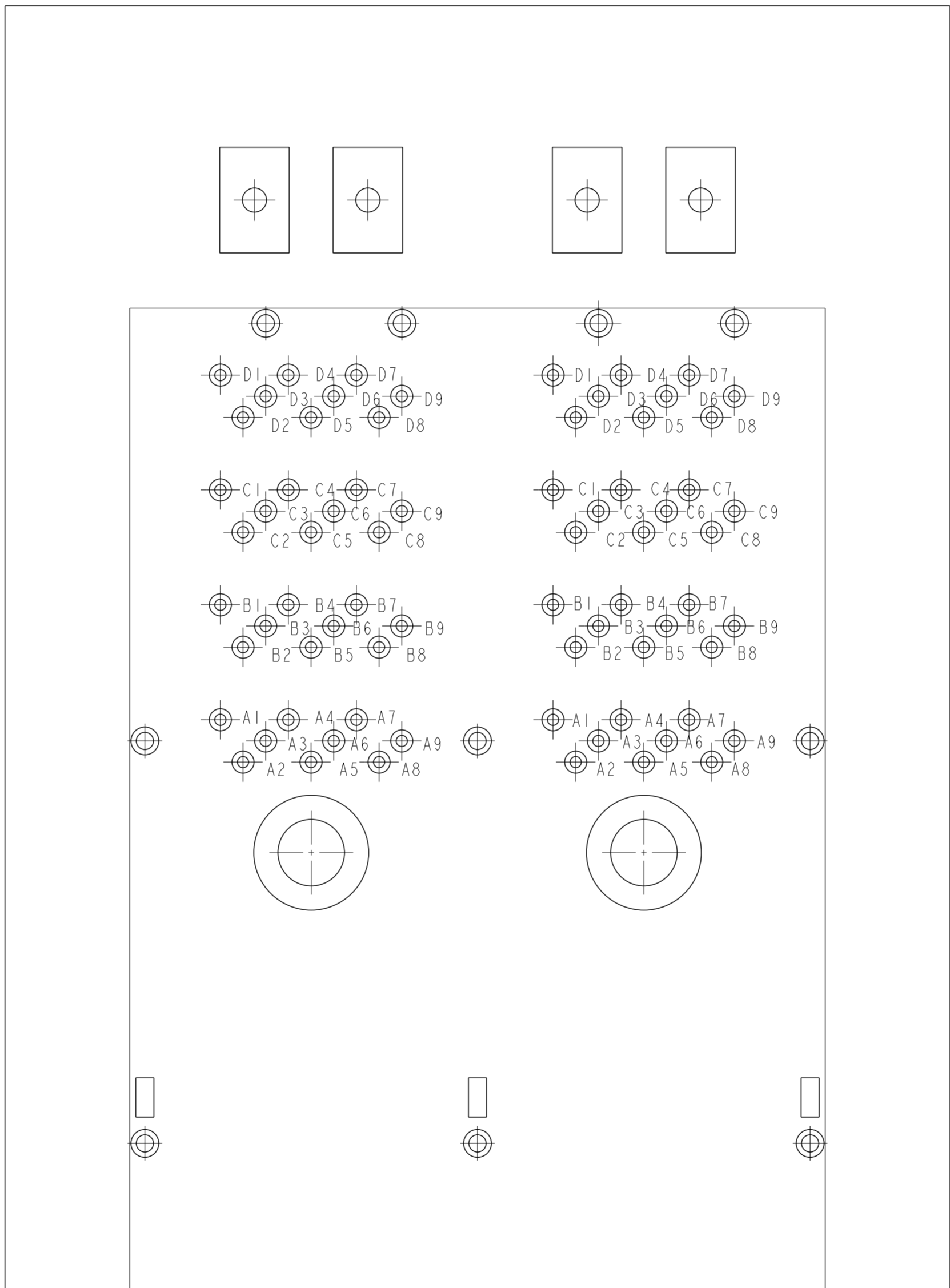
RECOMMENDED EXTRACTION TOOL
KEEP OUT AREA
NO COMPONENTS IN THESE AREAS



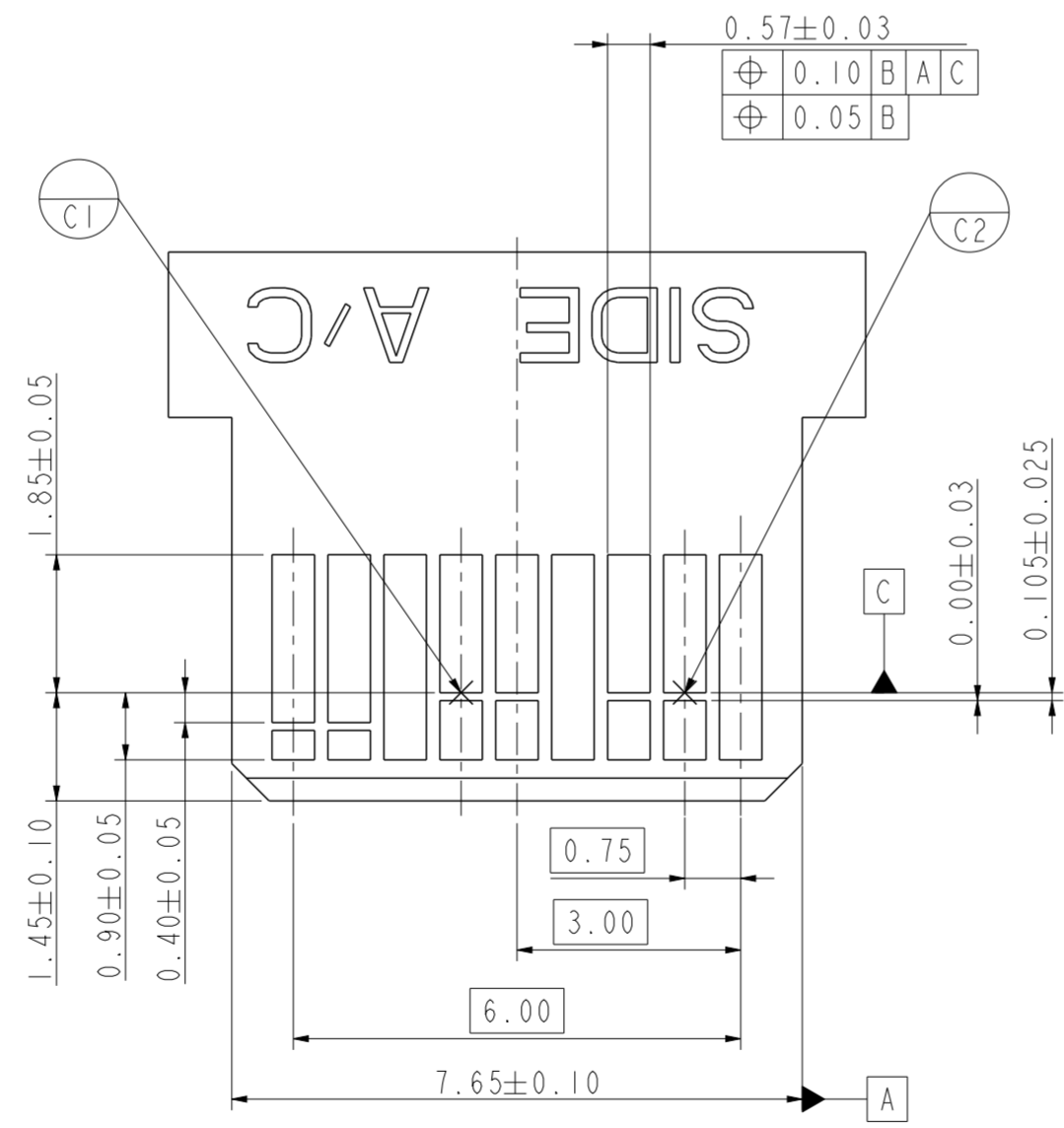
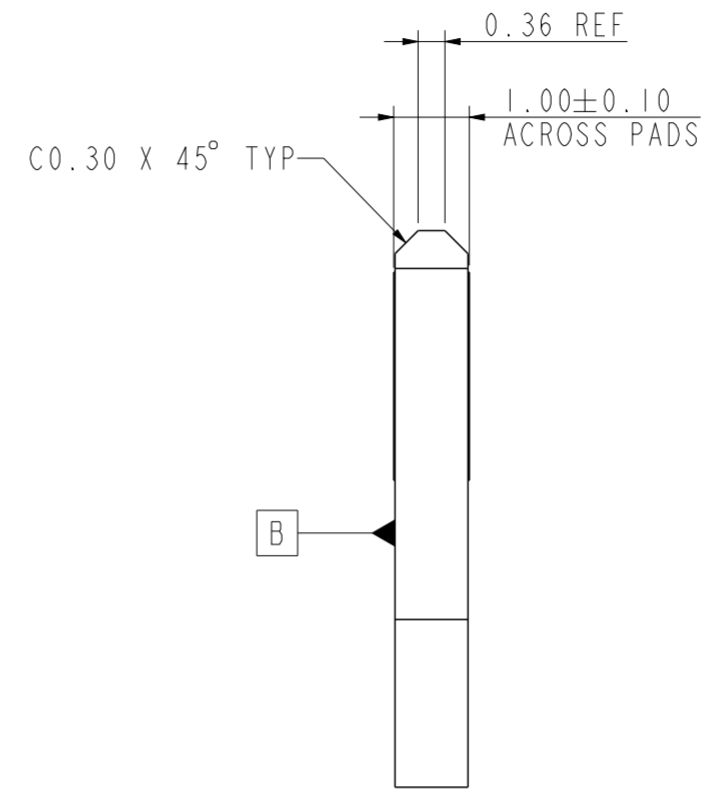
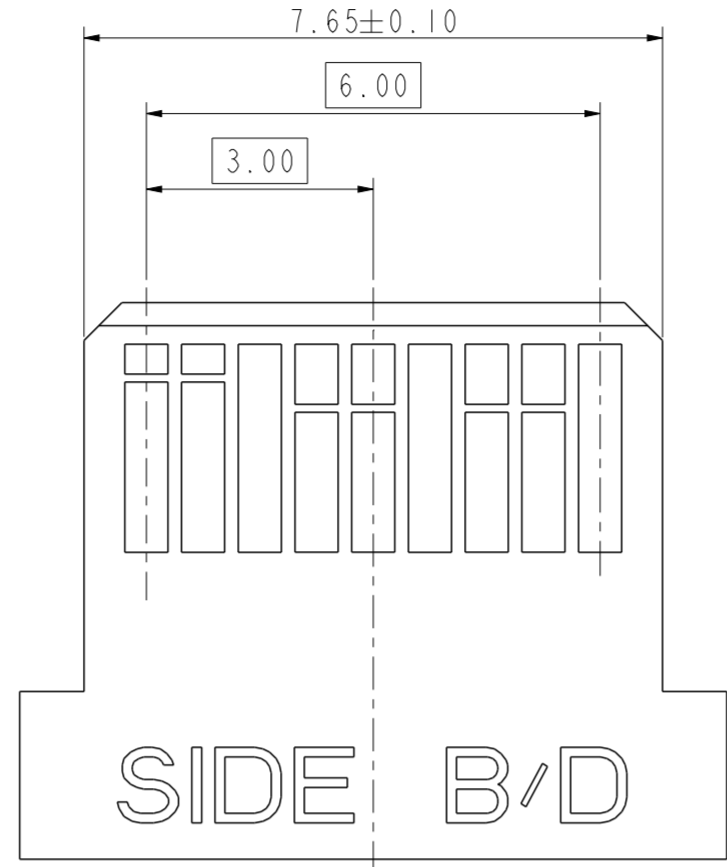
CAGE STAND OFF KEEP OUT AREA

spec ref	-	dr	Qin De-Feng	2012/1/21	projection	MM	size	A2	scale	1.000			
tolerance std	ISO 406 ISO 1101	eng	Qin De-Feng	2013/03/11			ecn no	-	rel level	Released			
TOLERANCES UNLESS OTHERWISE SPECIFIED		chr	Jon Qin	2013/03/11									
		appr	Pei-Ming Zheng	2013/03/11									
surface	ISO 1302	linear	0.X	±0.5	product family	MINI-SAS HD	title	1X2 EXTERNAL ASSEMBLY WITH LIGHT PIPE		dwg no	10120959	rev	A
		angular	0°	±3°	www.fci.com	cat. no.	-	Product - Customer Drw	sheet 4 of 6				

PIN OUT DESIGNATIONS



spec ref	-	dr	Qin De-Feng	2012/1/21	projection	MM	size	A2	scale	1.000
tolerance std	ISO 406 ISO 1101	eng	Qin De-Feng	2013/03/11			ecn no	-	rel level	Released
TOLERANCES UNLESS OTHERWISE SPECIFIED		chr	Jon Qin	2013/03/11						
surface	ISO 1302	appr	Pei-Ming Zheng	2013/03/11	product family	MINI-SAS HD	rel level	Released	divg no	10120959
	linear	0.X	±0.5		title		rev	A	Product - Customer Drw	
		0.XX	±0.3		1X2 EXTERNAL ASSEMBLY WITH LIGHT PIPE				sheet 5 of 6	
		0.XXX	±		MINI-SAS HD					
	angular	0°	±3°	www.fci.com	cat. no.	-	STATUS:Released		Printed: Mar 12, 2013	



RECOMMENDED PLUG PADDLE CARD
SEE SFF-8644 FOR DETAIL

- NOTES:
- 17. 0.05 MINIMUM KEEP OUT FOR SOLDER MASK AROUND ALL PADS.
 - 18. DATUM C TARGETS ARE DEFINED BY THE RESPECTIVE PAD CENTER LINES AND THE LEADING EDGE OF THE TARGET PADS.

spec ref	-	dr	Qin De-Feng	2012/1/21	projection	MM	size	A2	scale	1.000
tolerance std	ISO 406 ISO 1101	eng	Qin De-Feng	2013/03/11			ecn no	-	rel level	Released
TOLERANCES UNLESS OTHERWISE SPECIFIED		chr	Jon Qin	2013/03/11						
surface	ISO 1302	appr	Pei-Ming Zheng	2013/03/11	product family	MINI-SAS HD	rel level	Released	rev	A
linear	0.X ±0.5 0.XX ±0.3 0.XXX ±-			title	1X2 EXTERNAL ASSEMBLY WITH LIGHT PIPE MINI-SAS HD		dwg no	10120959		
angular	0° ±3°	www.fci.com		cat. no.	-		Product - Customer Drw	sheet 6 of 6		



Copyright FCI.