

## Base strip - GMSTBA 2,5/ 5-G-7,62 - 1766262

Please be informed that the data shown in this PDF Document is generated from our Online Catalog. Please find the complete data in the user's documentation. Our General Terms of Use for Downloads are valid (<http://download.phoenixcontact.com>)

Header, Nominal current: 12 A, Rated voltage (III/2): 630 V, Number of positions: 5, Pitch: 7.62 mm, Color: green, Contact surface: Tin, Assembly: Soldering



The figure shows a 10-position version of the product

### Why buy this product

- Versions with threaded flange and 7.62 mm pitch
- Plug-in direction parallel to the PCB
- Headers with angled solder pins for 630 V applications (III/2)



### Key commercial data

|                        |   |
|------------------------|---|
| Packing unit           | 1   |
| Minimum order quantity | 50  |
| Catalog page           | Page 315 (CC-2011)  |
| GTIN                   | <br>4 017918 032289 |
| Custom tariff number   | 85366990  |
| Country of origin      | GERMANY   |

### Technical data

#### Dimensions / positions

|                     |          |
|---------------------|----------|
| Length              | 12 mm    |
| Pitch               | 7.62 mm  |
| Dimension a         | 30.48 mm |
| Number of positions | 5        |
| Pin dimensions      | 1 x 1 mm |
| Hole diameter       | 1.4 mm   |

#### Technical data

|                             |                 |
|-----------------------------|-----------------|
| Range of articles           | GMSTBA 2,5/..-G |
| Insulating material group   | I               |
| Rated surge voltage (III/3) | 6 kV            |
| Rated surge voltage (III/2) | 6 kV            |

## Base strip - GMSTBA 2,5/ 5-G-7,62 - 1766262

### Technical data

#### Technical data

|   |        |
|---|--------|
| Rated surge voltage (II/2)              | 6 kV   |
| Rated voltage (III/2)                   | 630 V  |
| Rated voltage (II/2)                    | 630 V  |
| Connection in acc. with standard        | EN-VDE |
| Nominal current I <sub>N</sub>          | 12 A   |
| Nominal voltage U <sub>N</sub>          | 400 V  |
| Maximum load current                    | 12 A   |
| Insulating material                     | PA     |
| Inflammability class according to UL 94 | V0     |
| Color                                   | green  |
| Nominal voltage, UL/CUL Use Group B     | 250 V  |
| Nominal current, UL/CUL Use Group B     | 12 A   |
| Nominal voltage, UL/CUL Use Group D     | 300 V  |
| Nominal current, UL/CUL Use Group D     | 10 A   |

### Classifications

#### eclass

|            |          |
|------------|----------|
| eCl@ss 4.0 | 272607xx |
| eCl@ss 4.1 | 27260701 |
| eCl@ss 5.0 | 27260701 |
| eCl@ss 5.1 | 27260701 |
| eCl@ss 6.0 | 27260704 |
| eCl@ss 7.0 | 27440402 |

#### etim

|          |          |
|----------|----------|
| ETIM 3.0 | EC001121 |
| ETIM 4.0 | EC002637 |
| ETIM 5.0 | EC002637 |

#### unspsc

|               |          |
|---------------|----------|
| UNSPSC 6.01   | 30211810 |
| UNSPSC 7.0901 | 39121409 |
| UNSPSC 11     | 39121409 |
| UNSPSC 12.01  | 39121409 |
| UNSPSC 13.2   | 39121409 |

### Approvals

#### Approvals

#### Approvals

CSA / UL Recognized / VDE report with production monitoring / cUL Recognized / GOST / IECCEB Scheme / cULus Recognized


# Base strip - GMSTBA 2,5/ 5-G-7,62 - 1766262


## Approvals


Ex Approvals


Approvals submitted

## Approval details

|   |       |       |
|---|-------|-------|
| CSA  |       |       |
|   | B     | D     |
| Nominal current IN  | 10 A  | 10 A  |
| Nominal voltage UN  | 300 V | 300 V |

|   |       |       |
|---|-------|-------|
| UL Recognized  |       |       |
|   | B     | D     |
| Nominal current IN  | 12 A  | 10 A  |
| Nominal voltage UN  | 250 V | 300 V |

|   |       |
|---|-------|
| VDE report with production monitoring  |       |
| Nominal current IN  | 12 A  |
| Nominal voltage UN  | 400 V |

|  |       |       |
|--|-------|-------|
| cUL Recognized  |       |       |
|  | B     | D     |
| Nominal current IN   | 12 A  | 10 A  |
| Nominal voltage UN   | 250 V | 300 V |

|  |  |
|--|--|
| GOST  |  |
|--|--|

|                    |      |
|--------------------|------|
| IECEE CB Scheme    |      |
| Nominal current IN | 12 A |

## Base strip - GMSTBA 2,5/ 5-G-7,62 - 1766262

### Approvals

|                    |       |
|--------------------|-------|
| Nominal voltage UN | 400 V |
|--------------------|-------|



### Accessories

Accessories

Assembly

Accessories - MSTB-BL - 1755477



Keying cap, for forming sections, plugs onto header pin, green insulating material

### Marking

Marker cards - SK 7,62/3,8:FORTL.ZAHLEN - 0804549



Marker cards, Card, white, labeled, Horizontal: Consecutive numbers 1 - 10, 11 - 20, etc. up to 91 - 100, Mounting type: Adhesive, For terminal block width: 7.62 mm

### Plug/Adapter

Keying star - CR-MSTB - 1734401



Coding section, inserted into the recess in the header or the inverted plug, red insulating material

### Additional products

Base strip - GIC 2,5/ 5-G-7,62 - 1828702



Header, Nominal current: 12 A, Rated voltage (III/2): 630 V, Number of positions: 5, Pitch: 7.62 mm, Color: green, Contact surface: Tin, Assembly: Soldering

## Base strip - GMSTBA 2,5/ 5-G-7,62 - 1766262

### Accessories

---

Printed-circuit board connector - GMVSTBR 2,5/ 5-ST-7,62 - 1832552



Plug component, Nominal current: 12 A, Rated voltage (III/2): 630 V, Number of positions: 5, Pitch: 7.62 mm, Connection method: Screw connection, Color: green, Contact surface: Tin

---

Base strip - GICV 2,5/ 5-G-7,62 - 1828948



Header, Nominal current: 12 A, Rated voltage (III/2): 630 V, Number of positions: 5, Pitch: 7.62 mm, Color: green, Contact surface: Tin, Assembly: Soldering

---

Printed-circuit board connector - FRONT-GMSTB 2,5/ 5-ST-7,62 - 1806148



Plug component, Nominal current: 12 A, Rated voltage (III/2): 630 V, Number of positions: 5, Pitch: 7.62 mm, Connection method: Screw connection, Color: green, Contact surface: Tin

---

Printed-circuit board connector - GMVSTBW 2,5/ 5-ST-7,62 - 1832442



Plug component, Nominal current: 12 A, Rated voltage (III/2): 630 V, Number of positions: 5, Pitch: 7.62 mm, Connection method: Screw connection, Color: green, Contact surface: Tin

---

Printed-circuit board connector - GMSTB 2,5/ 5-ST-7,62 - 1767038



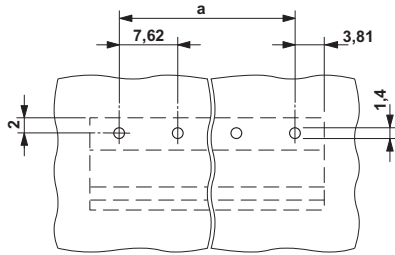
Plug component, Nominal current: 12 A, Rated voltage (III/2): 630 V, Number of positions: 5, Pitch: 7.62 mm, Connection method: Screw connection, Color: green, Contact surface: Tin

---

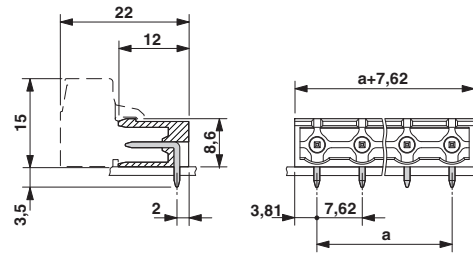
### Drawings

# Base strip - GMSTBA 2,5/ 5-G-7,62 - 1766262

Drilling diagram



Dimensioned drawing



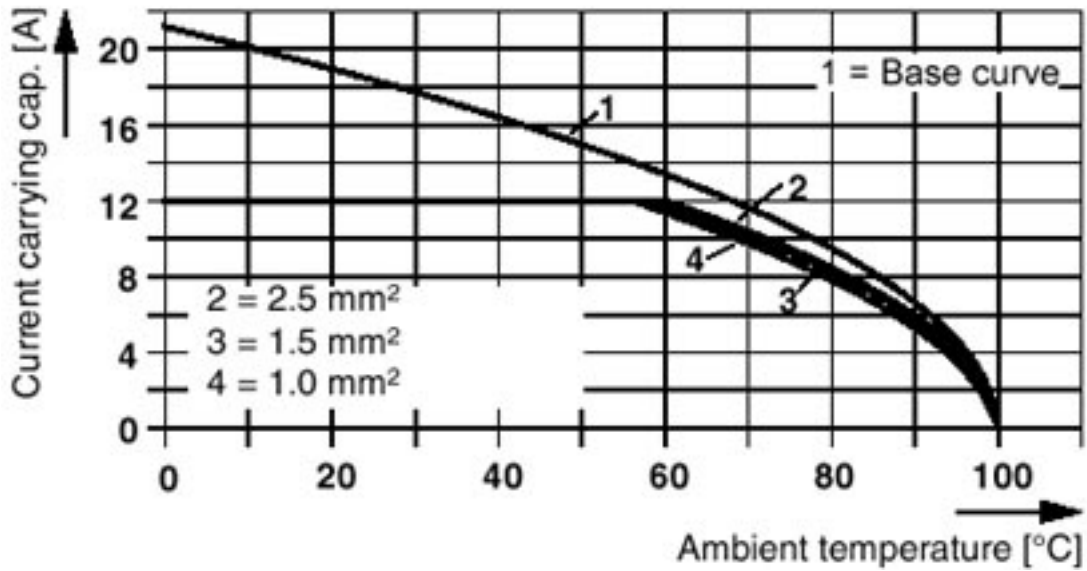
Diagram

Plug:

FRONT-GMSTB 2,5/5-ST(F)-7,62

Header:

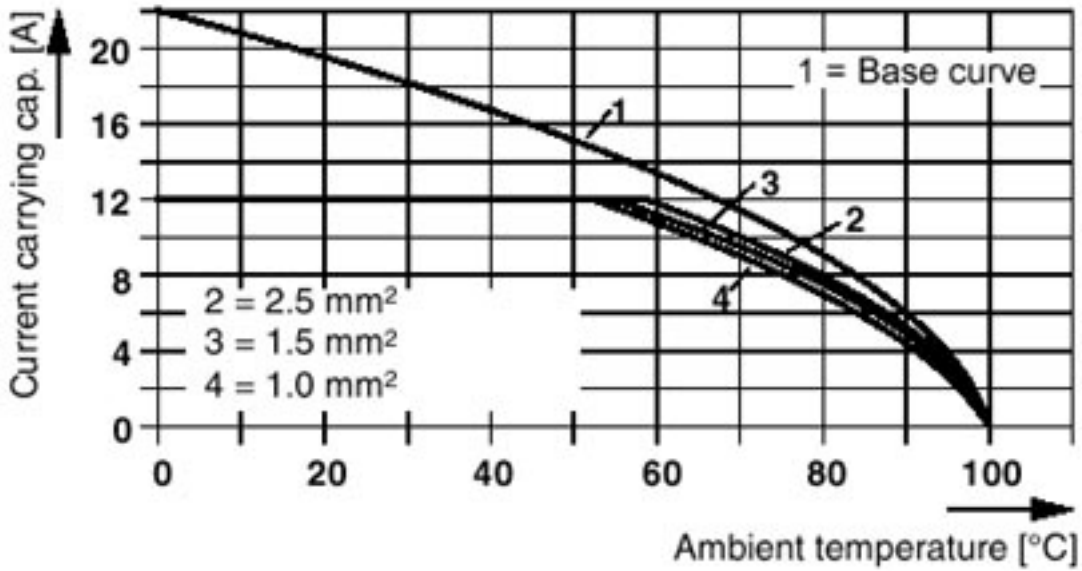
GMSTB(A) 2,5/5-G(F)-(7,62)



# Base strip - GMSTBA 2,5/ 5-G-7,62 - 1766262

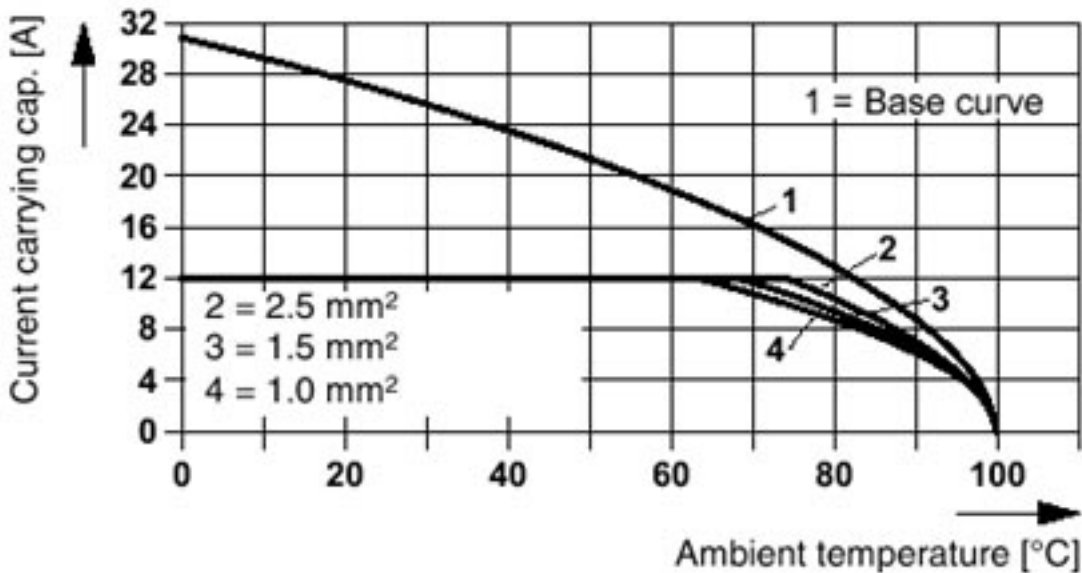
Diagram

Plug: GMSTBVR(W) 2,5/5-ST(F)-(-7,62)  
Header: GMSTB(A) 2,5/5-G(F)-(-7,62)



Diagram

Plug: GFKC 2,5/5-ST(F)-(-7,62)  
Header: GMSTB(A) 2,5/5-G(F)-(-7,62)



# Base strip - GMSTBA 2,5/ 5-G-7,62 - 1766262

Diagram

Plug: GMSTB 2,5/5-ST(F)-(-7,62)  
Header: GMSTB(A) 2,5/5-G(F)-(-7,62)

