

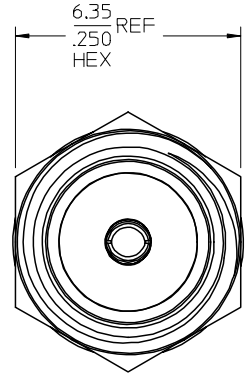
MATERIALS AND FINISHES

BODY BERYLLIUM COPPER  
PLATED NICKEL

CENTER CONTACT BERYLLIUM COPPER  
PLATED GOLD

INSULATOR TEFLON

SLEEVE BRASS  
PLATED NICKEL



SMA PLUG  
INTERFACE

SMB JACK  
INTERFACE

PS-89675-2730	ELECTRO/MECH PERFORM.
MIL-STD-348A, FIG.311.2	SMB INTERFACE
MIL-STD-348A, FIG.310.2	SMA INTERFACE
SPECIFICATION	DESCRIPTION

73386-0224	73386-0223, ONE PER BAG
73386-0223	BULK
PART NO.	PACKAGING

CHG: REDREW IN SD  
ADDED P/N  
73386-0224  
ADDED FRONT VIEW  
CHANGED ALL DIMS  
FROM IN/MM TO MM/IN  
DIM 15.62 REF  
WAS 15.72 REF

EC NO: URF2007-0287  
DRWN:FLAHERTY 2007/02/08  
CHKD:SHAH 2007/02/08  
APPR:JIMENER 2007/02/08

QUALITY SYMBOLS  
=0  
=0

DESCRIPTION  
A1

QUALITY SYMBOLS  
=0  
=0

GENERAL TOLERANCES (UNLESS SPECIFIED)	
mm	INCH
4 PLACES ± .004	± .0005
3 PLACES ± .005	± .0008
2 PLACES ± .008	± .0012
1 PLACE ± .010	± .0015
ANGULAR ± 2 °	

DIMENSION STYLE	
MM/IN	
DRAWN BY	DATE
EDC	1997/12/30
CHECKED BY	DATE
DHG	1998/01/05
APPROVED BY	DATE
GMH	1998/01/05
MATERIAL NO.	
SEE TABLE	

SCALE	DESIGN UNITS	THIRD ANGLE PROJECTION
	METRIC	
SMB PLUG TO SMA JACK ADAPTER, 50 OHMS BSA-SMBP/SMAJ		
molex MOLEX INCORPORATED		
MATERIAL NO.	DOCUMENT NO.	SHEET NO.
	SD-73386-022	1 OF 1

SMB PLUG TO SMA JACK ADAPTER, 50 OHMS BSA-SMBP/SMAJ		
molex MOLEX INCORPORATED		
MATERIAL NO.	DOCUMENT NO.	SHEET NO.
	SD-73386-022	1 OF 1