

Contact assignment:

- 1) brown
- 2) white
- 3) blue
- 4) black
- 5) green-yellow

Contact assignment:

- 1) white
- 2) brown
- 3) green
- 4) yellow
- 5) grey
- 6) pink
- 7) blue
- 8) red

Technical specification:

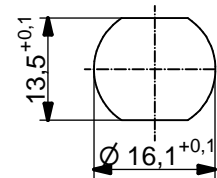
Rated voltage: IEC 61076-2-101	4pos 250 V	5pos 60 V	8pos 30 V
Current rating: IEC 61076-2-101	4/5pos 4 A at 40°C	8pos 2 A at 40°C	
Insulation resistance: IEC 60512	>=100 MΩ		
Pollution degree: IEC 60664-1	3/2		
Degree of protection: IEC 60529	IP 67, in mated condition		
Temperature range:	-30°C ... +85°C		
Mating cycles: IEC 60512-9a	>=100		

Materials:

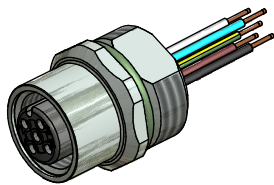
Contact:	CuZn
Contact plating:	Nickel, gold plated
Contact carrier:	PBT GF, UL 94
Sealing:	FPM
Socket housing:	CuZn, nickel plated
Grouting:	Polyurethane-resin, UL 94

Installation specification:

recommended torque:	1-1,2 Nm
Conec installation tool:	Torque wrench: 36-000200 Insert across flats 17: 36-000230



Minimum wall thickness 1,5mm,
alternativ panel cut-out d=16,1



Part no:	Description:	Pos	Length L:	Wire:
43-01000	SAL - 12 - FK4 - 0,5	4	0,5m	AWG 24 PVC, UL
43-xxxxx	SAL - 12 - FK4 - ...	4	x	
43-01001	SAL - 12 - FK5 - 0,5	5	0,5m	
43-xxxxx	SAL - 12 - FK5 - ...	5	x	
43-01002	SAL - 12 - FK8 - 0,5	8	0,5m	
43-xxxxx	SAL - 12 - FK8 - ...	8	x	

DO NOT ALTER CAD DRAWING BY HAND Directive 2002/95/EC RoHS compliant	Index: e 30.09.2014 rch Ä5374 Temperature range was: -30°C ... +80°C	dim. in mm	title: Female socket M12x1 with wire, frontmounting		
	tolerance of wire: L ≤ 0,5m: L + 20mm L > 0,5m: L + 4%	date			name
	general tolerance: 0 ± 0,50mm 0,0 ± 0,25mm 0,00 ± 0,10mm	drawn 20.02.07 appd. 07.03.07	Fromm Mankopf	dwg no: 43K1A213	
	THIS DRAWING MAY NOT BE COPIED OR REPRODUCED IN ANY WAY, AND MAY NOT BE PASSED ON TO A THIRD PARTY WITHOUT WRITTEN PERMISSION. OWNERSHIP AND COPYRIGHT OF CONEC GmbH	CONEC ®		part no: see table	