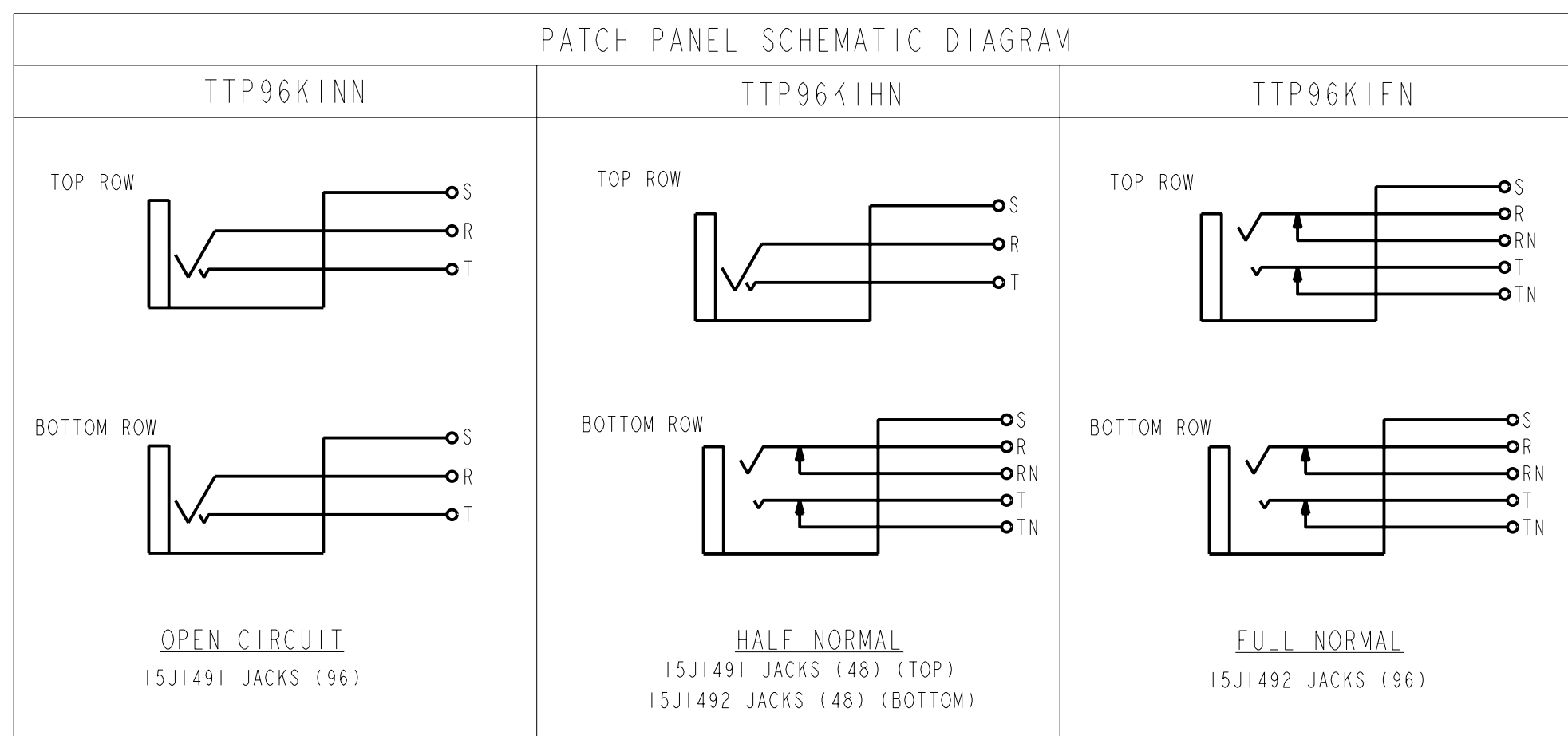
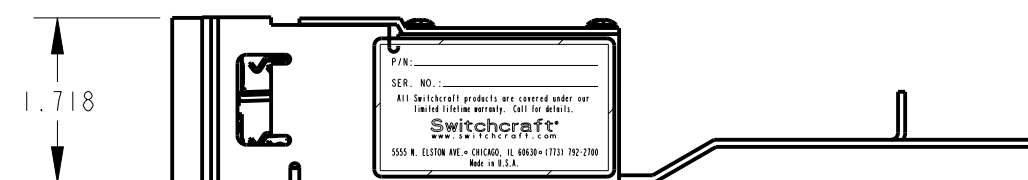


SCALE 1:2

**OBSOLETE SEE  
ECO # 25172**



**PRODUCT USES:**

- 1) NINETY-SIX JACKS:  
A) NICKEL PLATED FRAME AND ASSEMBLY SCREWS  
B) FLARED MIDDLE LUGS FOR EASIER SOLDERING  
C) OFFSET GROUND LUG FOR EASY BUSING OF GROUND WIRE  
D) SWITCHING CONTACTS ARE GOLD PLATED
- 2) REMOVABLE JACK PANEL FROM THE FRONT FOR EASY SOLDERING OF WIRE CONNECTIONS
- 3) REUSABLE AND ADJUSTABLE WIRE MANAGEMENT STRAPS
- 4) ALL DIMENSIONS ARE FOR REFERENCE ONLY.

CUSTOMER DRAWING

<p>★ STAR SYMBOL DENOTES CRITICAL DIMENSION</p> <p>UNLESS OTHERWISE SPECIFIED</p> <p>1. ALL DIMENSIONS IN INCHES - TWO PLACE DECIMALS ±0.01 - THREE PLACE DECIMALS ±0.005 - ANGLES ±1° - ALL DIA. CONCENTRIC WITHIN 0.005 T.I.R.</p> <p>2. FEATURES ON THE SAME CENTERLINE MUST BE ALIGNED WITHIN ±0.002</p> <p>3. REMOVE ALL BURRS</p>				<p>THIS DRAWING DESCRIBES A DESIGN CONSIDERED PROPRIETARY IN NATURE, DEVELOPED AND MANUFACTURED BY SWITCHCRAFT INC. AND IS RELEASED ON A CONFIDENTIAL BASIS FOR IDENTIFICATION PURPOSES ONLY.</p>					
<p>SIZE</p>		<p>WIDTH</p>		<p>MULT</p>		<p>LBS/M</p>		<p>TEMPER</p>	
<p>FINISH</p>				<p>MATERIAL</p>		<p>SPEC No.</p>			
<p>FIRST USED ON</p>				<p>SCALE</p>		<p>1:2</p>			
<p>DATE DRAWN</p>		<p>BY</p>		<p>CHKD</p>		<p>APVD</p>		<p>Switchcraft®</p>	
<p>25-Mar-00</p>		<p>JRS</p>		<p>JF</p>		<p>JF</p>		<p>SHEET   OF  </p>	
<p>REV</p>		<p>ECO NUMBER</p>		<p>DATE</p>		<p>BY</p>		<p>APVD</p>	
<p>REVISIONS</p>		<p>DO NOT SCALE DRAWING</p>		<p>NAME</p>		<p>PART No.</p>		<p>REV</p>	
<p>B</p>		<p>23587</p>		<p>12-19-00</p>		<p>JL</p>		<p>JF</p>	
<p>A</p>		<p>RELEASE TO PROD. 21867</p>		<p>8-8-97</p>		<p>MM</p>		<p>DK</p>	
<p>TT JACK PATCH PANEL KIT</p>		<p>1 3/4" UNWIRED</p>		<p>TTP96KI SERIES</p>		<p>B</p>		<p>B</p>	